

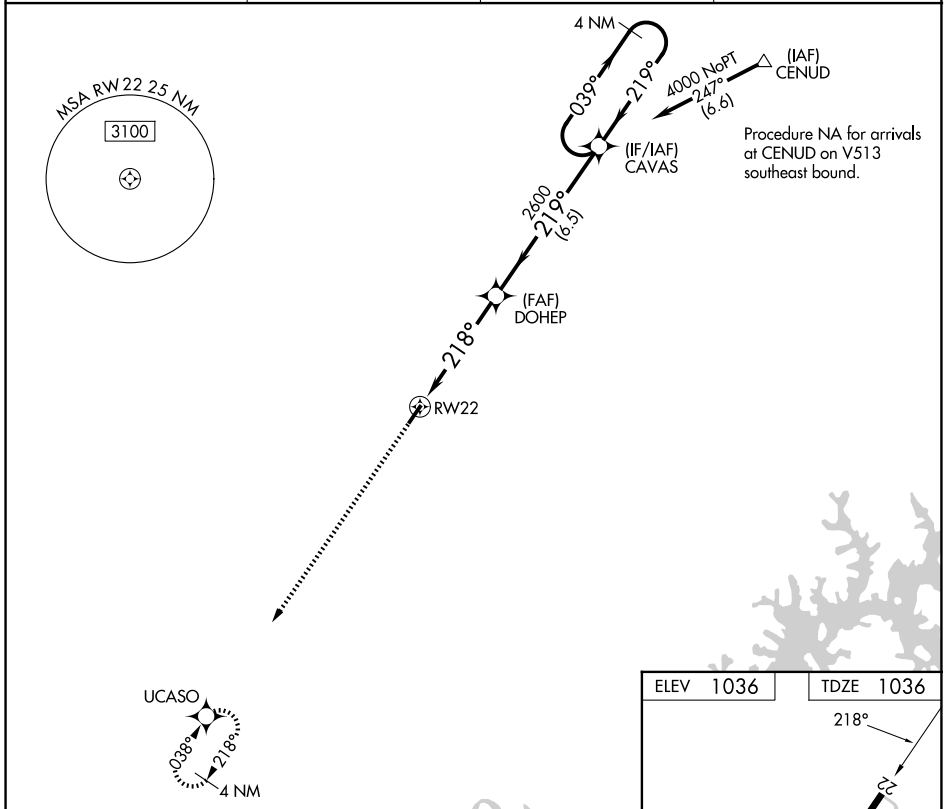
WAAS CH 58031 W22A	APP CRS 218°	Rwy Ldg TDZE Apt Elev	4000 1036 1036
--	------------------------	-----------------------------	---

RNAV (GPS) RWY 22

TOMPKINSVILLE/MONROE COUNTY (T'ZV)

▼ Baro-VNAV NA. DME/DME RNP-0.3 NA. Helicopter visibility reduction below ¼ SM NA. Use Glasgow altimeter setting. Night landing: Rwy 4 NA.
▲ NA MISSED APPROACH: Climb to 4000 direct UCASO and hold.

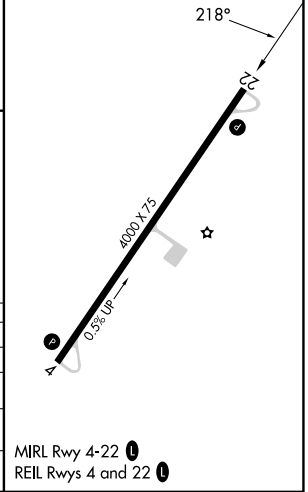
AWOS-AV 124.175	GLW AWOS-3 118.525	MEMPHIS CENTER 133.85 285.5	UNICOM 123.05 (CTAF) 0
---------------------------	------------------------------	---------------------------------------	----------------------------------



SE-1, 16 APR 2026 to 14 MAY 2026

SE-1, 16 APR 2026 to 14 MAY 2026

ELEV 1036	TDZE 1036
-----------	-----------



4000	UCASO	*LNAV only.	CAVAS	4 NM Holding Pattern
		*1.7 NM to RWY 22	DOHEP 2600	GP 3.00° TCH 30
		1.7	3.1 NM	6.5 NM
CATEGORY	A	B	C	D
LPV DA		1385-1¼	349 (400-1¼)	NA
LNAV/VNAV DA		1593-2	557 (600-2)	NA
LNAV MDA	1620-1	584 (600-1)	1620-1¾ 584 (600-1¾)	NA
CIRCLING	1640-1 604 (700-1)	1800-1 764 (800-1)	1840-2¼ 804 (900-2¼)	NA

MIRL Rwy 4-22 0
REIL Rws 4 and 22 0