

RNAV (GPS) RWY 4

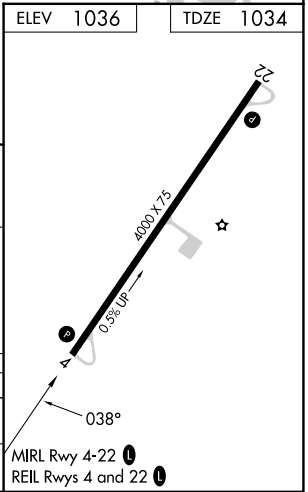
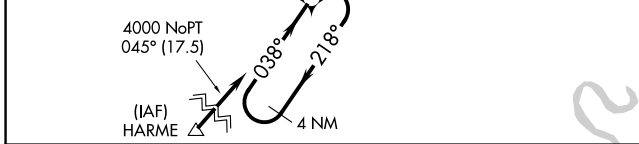
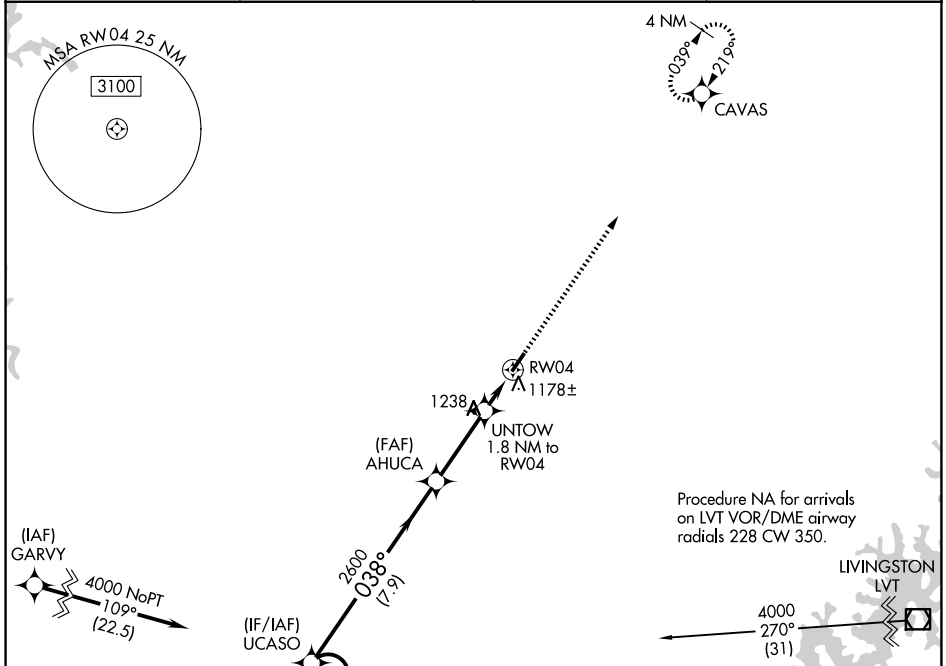
TOMPKINSVILLE/MONROE COUNTY (T'ZV)

APP CRS 038°	Rwy Ldg TDZE Apt Elev	4000 1034 1036
------------------------	-----------------------------	---

▼ DME/DME RNP-0.3 NA.
▲ NA Helicopter visibility reduction below 1 SM NA.
 Night landing: Rwy 4 NA.
 Use Glasgow altimeter setting.

MISSED APPROACH: Climb to 4000 direct CAVAS and hold.

AWOS-AV 124.175	GLW AWOS-3 118.525	MEMPHIS CENTER 133.85 285.5	UNICOM 123.05 (CTAF) 0
---------------------------	------------------------------	---------------------------------------	----------------------------------



CATEGORY	A	B	C	D
LNNAV MDA	1540-1	506 (600-1)	1540-1 3/8 506 (600-1 3/8)	NA
CIRCLING	1640-1 604 (700-1)	1800-1 764 (800-1)	1840-2 1/4 804 (900-2 1/4)	NA

4000	218°	038°	038°	2600	1640	UNTOW 1.8 NM to RW04	RW04
------	------	------	------	------	------	----------------------	------

SE-1, 16 APR 2026 to 14 MAY 2026

SE-1, 16 APR 2026 to 14 MAY 2026