

APP CRS	Rwy Ldg TDZE	N/A
011°	Apt Elev	4264

# RNAV (GPS)-A

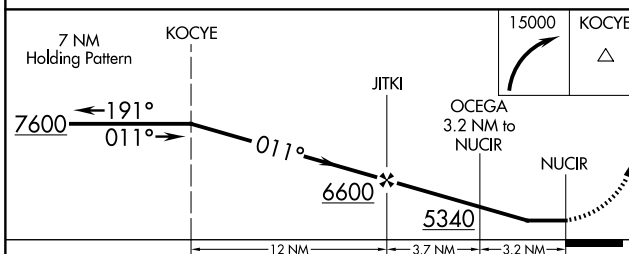
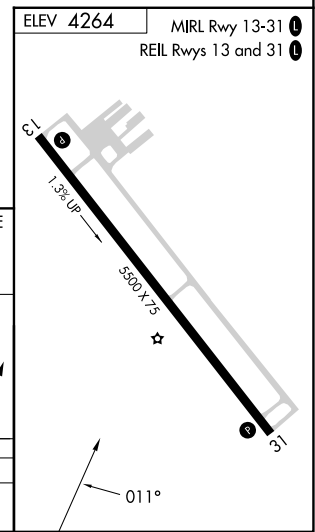
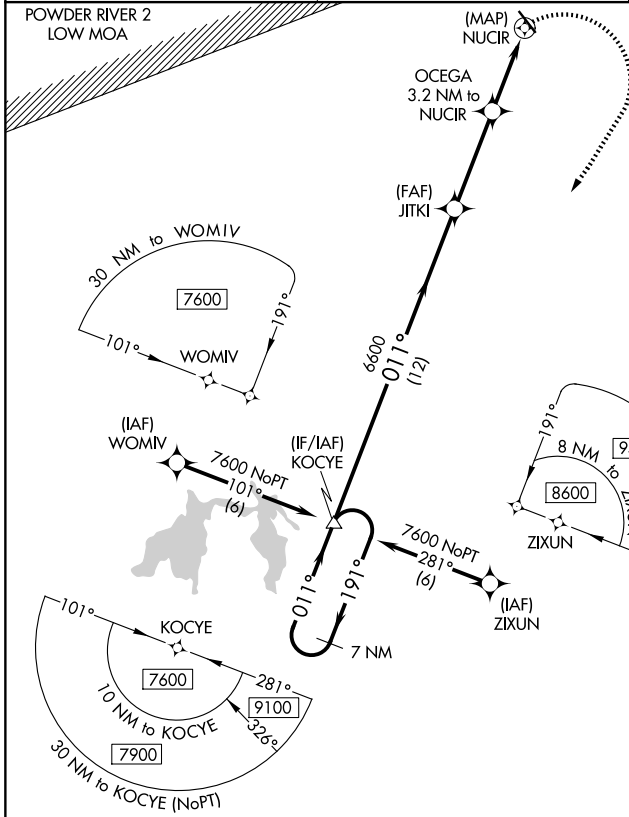
HULETT MUNI (W43)

RNP APCH - GPS.

Procedure NA at night. When local altimeter setting is not received, use GCC altimeter setting and increase all MDA 120 feet and visibility Cat B ¼ SM.

MISSED APPROACH: Climbing right turn to 15000 direct KOCYE and hold, continue climb-in-hold to 15000.

AWOS-3PT <b>128.775</b>	DENVER CENTER <b>127.95 338.2</b>	UNICOM <b>122.8 (CTAF)</b>
----------------------------	--------------------------------------	-------------------------------



CATEGORY	A	B	C	D
CIRCLING	4900-1 636 (700-1)	5020-1 756 (800-1)	NA	

NW-1, 16 APR 2026 to 14 MAY 2026

NW-1, 16 APR 2026 to 14 MAY 2026