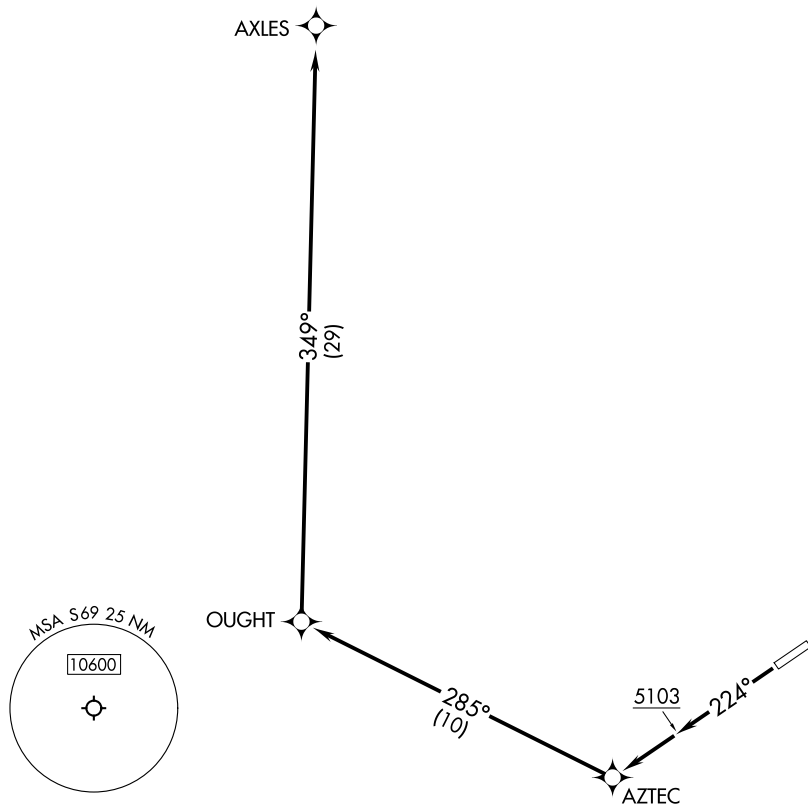


# AXLES ONE DEPARTURE (OBSTACLE) (RNAV)

RNAV 1 - GPS.

HELENA DEP CON  
119.5 229.4



NW-1, 16 APR 2026 to 14 MAY 2026

NW-1, 16 APR 2026 to 14 MAY 2026

### TAKEOFF MINIMUMS

Rwy 22: Standard with minimum climb of 400'/NM to 7700.

### TAKEOFF OBSTACLE NOTES

- Rwy 22: Building 46' from DER, 188' left of centerline, 14' AGL/4586' MSL.
- Wind indicator 60' from DER, 159' right of centerline, 8' AGL/4578' MSL.
- Trees beginning 75' from DER, 15' left of centerline, up to 4652' MSL.
- Trees beginning 147' from DER, 4' right of centerline, up to 4699' MSL.
- Trees beginning 991' from DER, 116' left of centerline, up to 4656' MSL.
- Trees beginning 1118' from DER, 16' left of centerline, up to 4658' MSL.
- Trees, terrain beginning 2.3 NM from DER, 2507' left of centerline, up to 5015' MSL.

NOTE: Chart not to scale.

### DEPARTURE ROUTE DESCRIPTION

TAKEOFF RUNWAY 22: Climb on heading 224° to 5103, then direct AZTEC, then on track 285° to OUGHT, then on track 349° to cross AXLES at or above MEA/MCA for route of flight.

# AXLES ONE DEPARTURE (OBSTACLE) (RNAV)