

APP CRS 196°	Rwy Ldg TDZE Apt Elev	3815 1276 1276
------------------------	-----------------------------	---

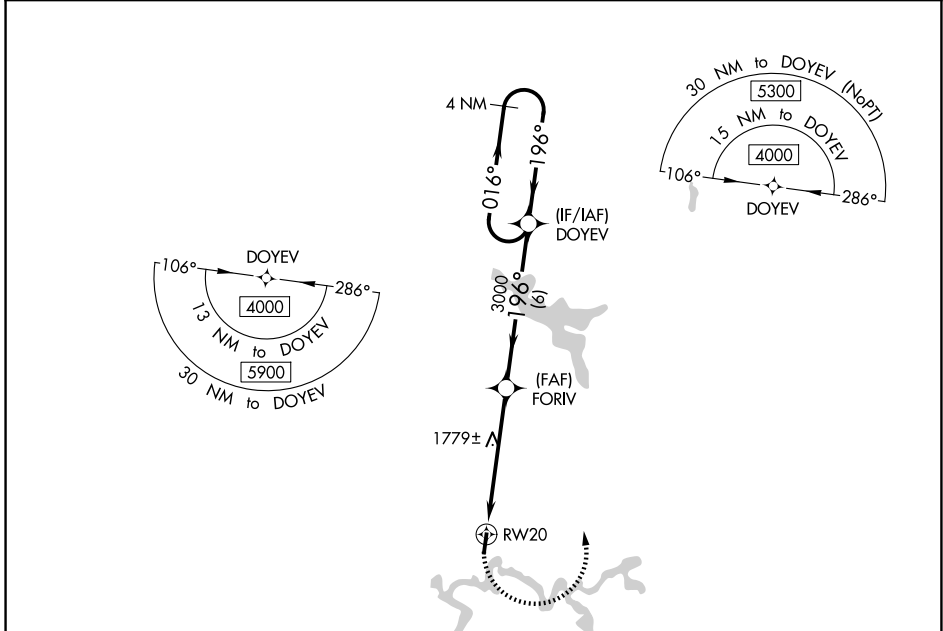
RNAV (GPS) RWY 20

BRAXTON COUNTY (48I)

NA DME/DME RNP-0.3 NA. Procedure NA at night. Helicopter visibility reduction below 1 SM NA. When local altimeter setting not received, use Clarksburg altimeter setting and increase all MDA 260 feet. Increase LNAV Cat A/B visibility ¼ mile, LNAV Cat C visibility ½ mile, and Circling Cat A visibility ¼ mile.

MISSED APPROACH: Climbing left turn to 4000 direct DOYEV and hold.

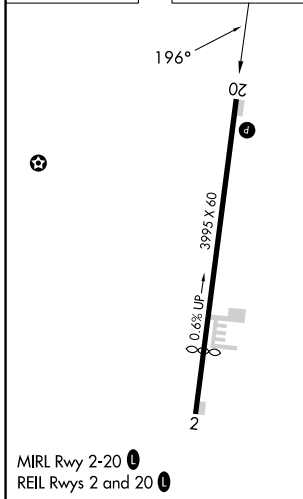
AWOS-3PT 118.225	CLARKSBURG APP CON ★ 121.15 284.65	CTAF 122.9
----------------------------	--	----------------------



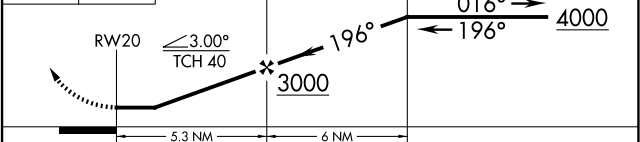
NE-4, 16 APR 2026 to 14 MAY 2026

NE-4, 16 APR 2026 to 14 MAY 2026

ELEV 1276	D	TDZE 1276
-----------	----------	-----------



4000	DOYEV	VGSI and descent angles not coincident (VGSI Angle 4.00/TCH 40).	DOYEV	4 NM Holding Pattern
------	-------	--	-------	----------------------



CATEGORY	A	B	C	D
LNAV MDA	2060-1 784 (800-1)	2060-1 ¼ 784 (800-1 ¼)	2060-2 ½ 784 (800-2 ½)	NA
CIRCLING	2060-1 784 (800-1)	2240-1 ½ 964 (1000-1 ½)	2240-3 964 (1000-3)	NA