

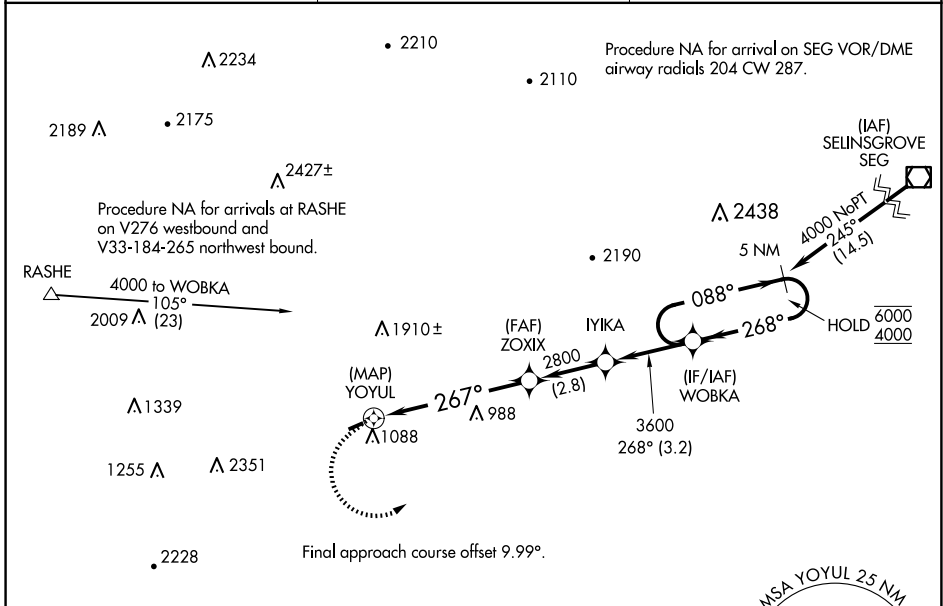
APP CRS <b>267°</b>	Rwy Idg <b>2627</b>
	TDZE <b>545</b>
	Apt Elev <b>545</b>

# RNAV (GPS) RWY 26

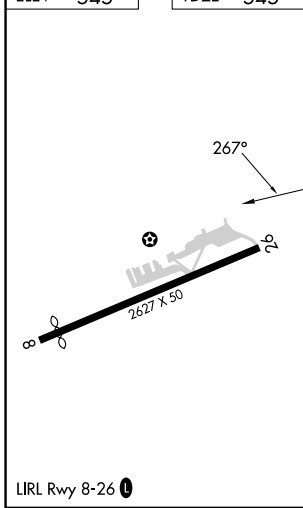
MIFFLINTOWN (P34)

RNP APCH - GPS.		MISSED APPROACH: Climbing left turn to 4000 direct WOBKA and hold, continue climb-in-hold to 4000.
<p>▼ Procedure NA at night. Rwy 26 helicopter visibility reduction below 1 SM NA.</p> <p>▲ NA Circling NA north of Rwy 8-26. Use Penn Valley altimeter setting; when not received, use Reedsville altimeter setting and increase all MDAs 240 feet and LNAV visibility Cat B ¼ SM.</p>		

SEG ASOS <b>123.975</b>	NEW YORK APP CON <b>134.8 338.3</b>	UNICOM <b>122.8 (CTAF) 0</b>
----------------------------	--	---------------------------------



ELEV	545	TDZE	545
------	-----	------	-----



	WOBKA		5 NM Holding Pattern	
	(MAP) YOYUL	ZOXIX	IYIKA	WOBKA
	267°	2800	3600	268°
	0.5	5.7 NM	2.8 NM	3.2 NM
CATEGORY	A	B	C	D
LNAV MDA	1440-1¼	895 (900-1¼)	NA	
CIRCLING	1560-1¼ 1015 (1100-1¼)	2080-1½ 1535 (1600-1½)	NA	

NE-4, 16 APR 2026 to 14 MAY 2026

NE-4, 16 APR 2026 to 14 MAY 2026