

# SNIDR TWO DEPARTURE (RNAV)

SC-3, 16 APR 2026 to 14 MAY 2026

SAN ANTONIO DEP CON  
125.1 307.0

RNAV 1 - DME/DME/IRU or GPS.

RADAR required for non-GPS equipped aircraft.  
RADAR required.

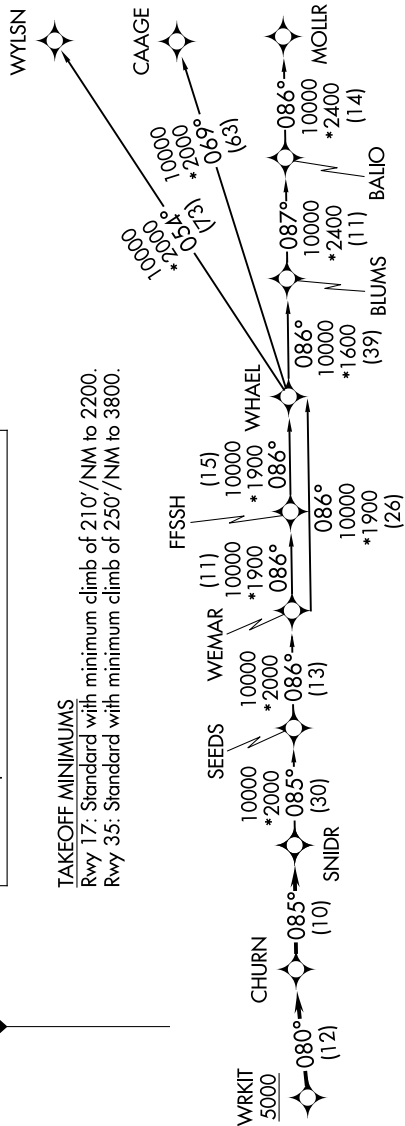
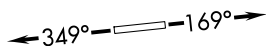
**TOP ALTITUDE:  
ASSIGNED BY ATC**

### TAKEOFF MINIMUMS

Rwy 17: Standard with minimum climb of 210'/NM to 2200.

Rwy 35: Standard with minimum climb of 250'/NM to 3800.

N

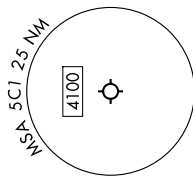


### DEPARTURE ROUTE DESCRIPTION

▶ **TAKEOFF RUNWAY 17:** Climb on heading 169° or as assigned by ATC, for vectors to WRKIT, thence. . .  
**TAKEOFF RUNWAY 35:** Climb on heading 349° or as assigned by ATC, for vectors to WRKIT, thence. . .

. . . on track 080° to CHURN, then on track 085° to SNIDR. Expect filed altitude 10 minutes after departure.

- BLUMS TRANSITION (SNIDR2.BLUMS)
- CAAGE TRANSITION (SNIDR2.CAAGE)
- FFSSH TRANSITION (SNIDR2.FFSSH)
- MOLLR TRANSITION (SNIDR2.MOLLR)
- SEEDS TRANSITION (SNIDR2.SEEDS)
- WEMAR TRANSITION (SNIDR2.WEMAR)
- WHAEL TRANSITION (SNIDR2.WHAEL)
- WYLSN TRANSITION (SNIDR2.WYLSN)



NOTE: Chart not to scale.

SC-3, 16 APR 2026 to 14 MAY 2026

# SNIDR TWO DEPARTURE (RNAV)