

LOC/DME I-BYL 108.3 Chan 20	APP CRS 200°	Rwy Ldg TDZE 1178 Apt Elev 1178
---	------------------------	---

LOC RWY 20

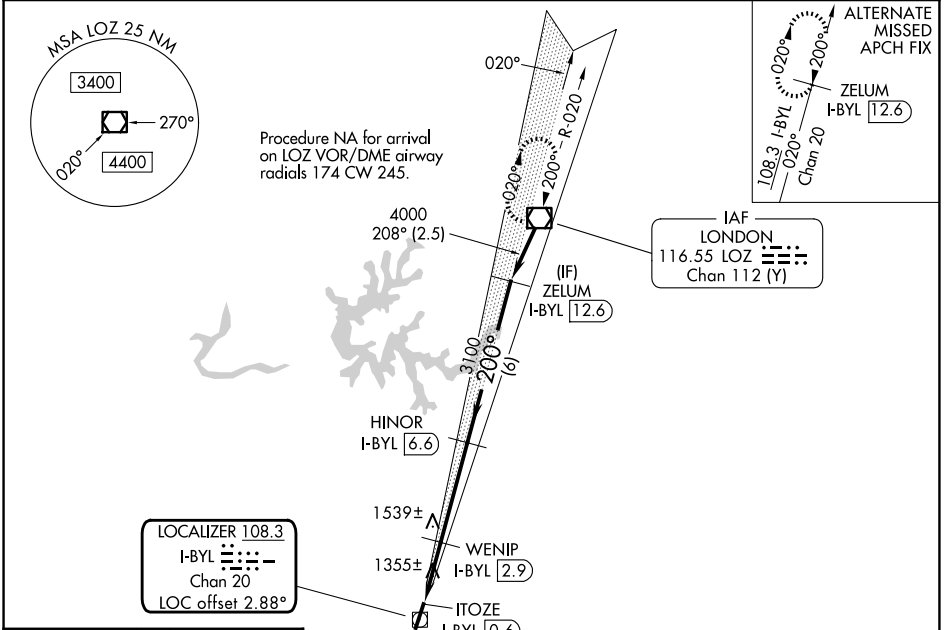
WILLIAMSBURG-WHITLEY COUNTY (BYL)

DME required.

⚠ Rwy 20 helicopter visibility reduction below $\frac{3}{4}$ SM NA. VDP NA when using London altimeter setting. When local altimeter setting not received, use London altimeter setting and increase all MDAs 60 feet and S-20 Cats C/D visibility $\frac{1}{8}$ SM.

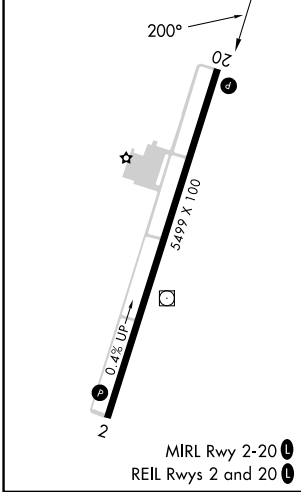
MISSED APPROACH: Climb to 1800 then climbing left turn to 4000 direct LOZ VOR/DME and hold.

AWOS-3 119.575	INDIANAPOLIS CENTER 124.625 371.925	UNICOM 122.7 (CTAF)
--------------------------	---	-------------------------------



LOCALIZER 108.3
I-BYL
Chan 20
LOC offset 2.88°

ELEV 1178	TDZE 1178
-----------	-----------



1800	4000	LOZ	VGSI and descent angles not coincident (VGSI Angle 3.17/TCH 30).	
WENIP I-BYL 2.9		HINOR I-BYL 6.6		ZELUM I-BYL 12.6
ITOZE I-BYL 0.6		3100		4000
1940		2.95° TCH 45		
1 NM		1.3 NM		3.7 NM
CATEGORY	A	B	C	D
S-20	1740-1	562 (600-1)	1740- $1\frac{5}{8}$	562 (600-1 $\frac{5}{8}$)
CIRCLING	1760-1	1860-1	2240-3	2260-3
	582 (600-1)	682 (700-1)	1062 (1100-3)	1082 (1100-3)

SE-1, 16 APR 2026 to 14 MAY 2026

SE-1, 16 APR 2026 to 14 MAY 2026