

WAAS CH <b>70403</b> <b>W20A</b>	APP CRS <b>203°</b>	Rwy Ldg TDZE Apt Elev	<b>5499</b> <b>1178</b> <b>1178</b>
--	------------------------	-----------------------------	---

# RNAV (GPS) RWY 20

WILLIAMSBURG-WHITLEY COUNTY (BYL)

RNP APCH.

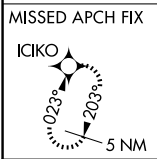
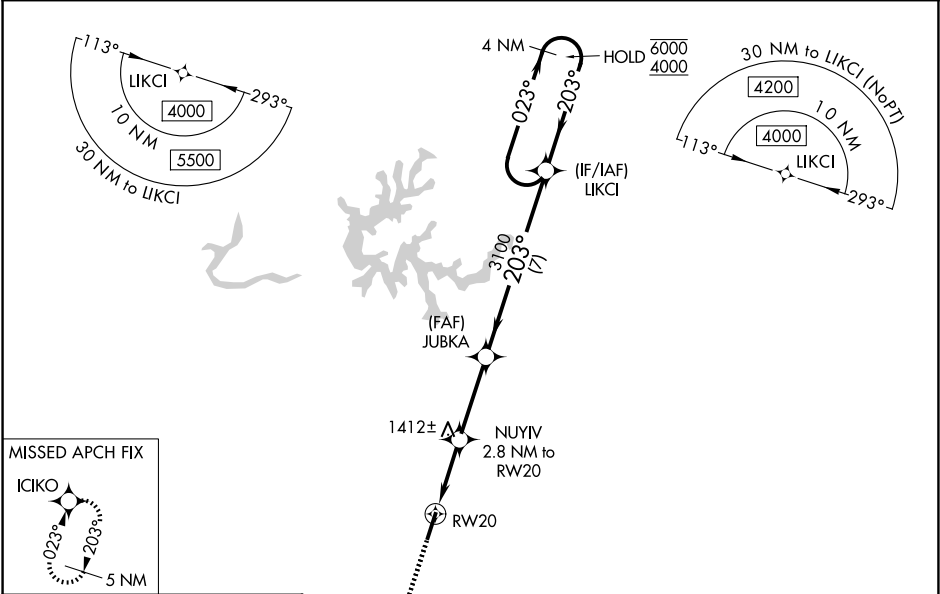
**⚠** Rwy 20 helicopter visibility reduction below  $\frac{3}{4}$  SM NA.  
For uncompensated Baro-VNAV systems,  
LNAV/VNAV NA below -17°C or above 54°C.  
**❄** -16°C

MISSED APPROACH: Climb to 4900 direct ICIKO and hold, continue climb-in-hold 4900.

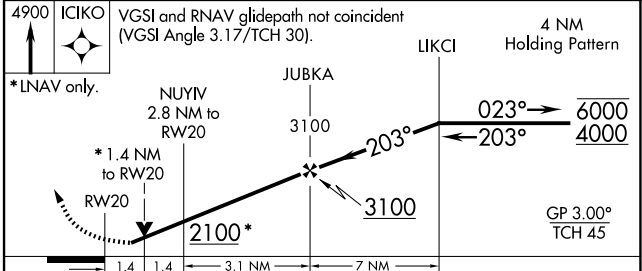
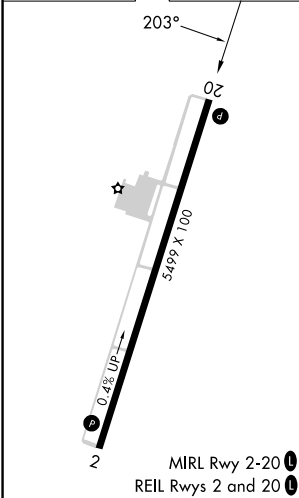
AWOS-3  
**119.575**

INDIANAPOLIS CENTER  
**124.625 371.925**

UNICOM  
**122.7 (CTAF) 0**



ELEV 1178	TDZE 1178
-----------	-----------



CATEGORY	A	B	C	D
LPV DA		1651-1 $\frac{3}{8}$	473 (500-1 $\frac{3}{8}$ )	
LNAV/VNAV DA		1670-1 $\frac{5}{8}$	492 (500-1 $\frac{5}{8}$ )	
LNAV MDA	1680-1	502 (600-1)	1680-1 $\frac{3}{8}$	502 (600-1 $\frac{3}{8}$ )
CIRCLING	1760-1 582 (600-1)	1860-1 682 (700-1)	2240-3 1062 (1100-3)	2260-3 1082 (1100-3)

SE-1, 16 APR 2026 to 14 MAY 2026

SE-1, 16 APR 2026 to 14 MAY 2026