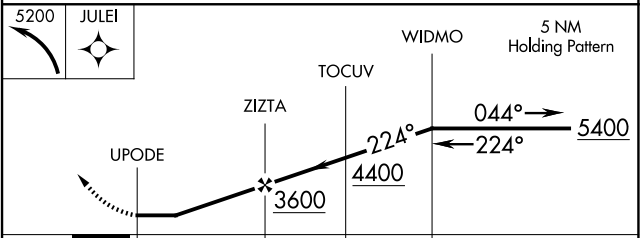
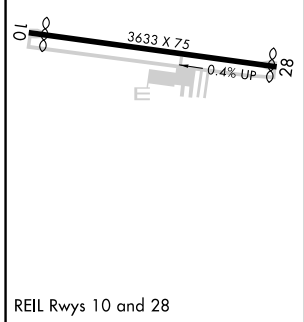
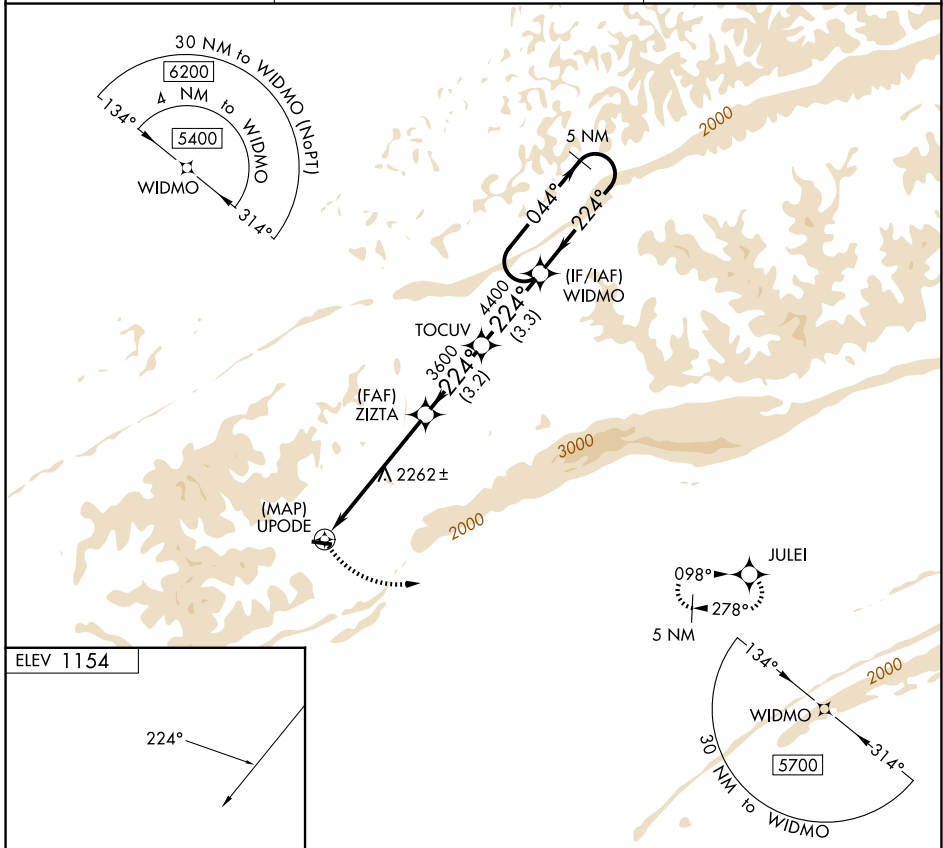


APP CRS <b>224°</b>	Rwy Ldg TDZE Apt Elev	<b>NA</b> <b>NA</b> <b>1154</b>
------------------------	-----------------------------	---------------------------------------

# RNAV (GPS)-A

MIDDLESBORO/BELL COUNTY (1A6)

	DME/DME RNP-0.3 NA. When local altimeter setting not received, use London altimeter setting: increase all MDA 100 feet. Procedure NA at night. Helicopter visibility reduction below 1 SM NA.	MISSED APPROACH: Climbing left turn to 5200 direct JULEI and hold.
	AWOS-3 <b>119.425</b>	INDIANAPOLIS CENTER <b>124.625 371.925</b>



CATEGORY	A	B	C	D
CIRCLING	2780-1¼ 1626 (1700-1¼)	3080-1½ 1926 (2000-1½)	NA	

SE-1, 16 APR 2026 to 14 MAY 2026

SE-1, 16 APR 2026 to 14 MAY 2026