

(BLTWY7.BLTWY) 21280

BLTWY SEVEN DEPARTURE (RNAV) AL-10328 (FAA)

HOUSTON EXEC (TME)
HOUSTON, TEXAS

ATIS
119.525
CLNC DEL
132.075
GND CON
132.075
EXECUTIVE TOWER *
126.975 (CTAF)
HOUSTON DEP CON
123.8 257.7

**TOP ALTITUDE:
ASSIGNED BY ATC**

NOTE: RADAR required.
NOTE: DME/DME/IRU or GPS required.
NOTE: RNAV 1.

TAKEOFF MINIMUMS

Rwy 18, 36: Standard with minimum climb of 500' per NM to 680.

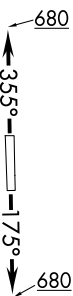
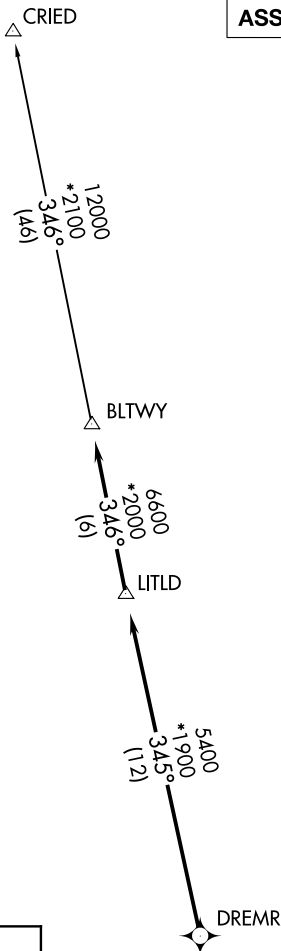
▼ DEPARTURE ROUTE DESCRIPTION

TAKEOFF RUNWAY 18: Climb on heading 175° to 680 for RADAR vectors to DREMR, thence . . .

TAKEOFF RUNWAY 36: Climb on heading 355° to 680 for RADAR vectors to DREMR, thence . . .

...on track 345° to LITLD, then on track 346° to BLTWY, then on (transition). Maintain ATC assigned altitude. Expect filed altitude 10 minutes after departure.

CRIED TRANSITION (BLTWY7.CRIED)



NOTE: Chart not to scale.

BLTWY SEVEN DEPARTURE (RNAV)
(BLTWY7.BLTWY) 07OCT21

HOUSTON, TEXAS
HOUSTON EXEC (TME)

SC-5, 16 APR 2026 to 14 MAY 2026

SC-5, 16 APR 2026 to 14 MAY 2026