

RNAV 1 - DME/DME/IRU or GPS.

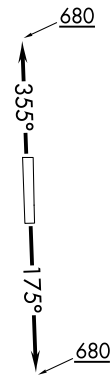
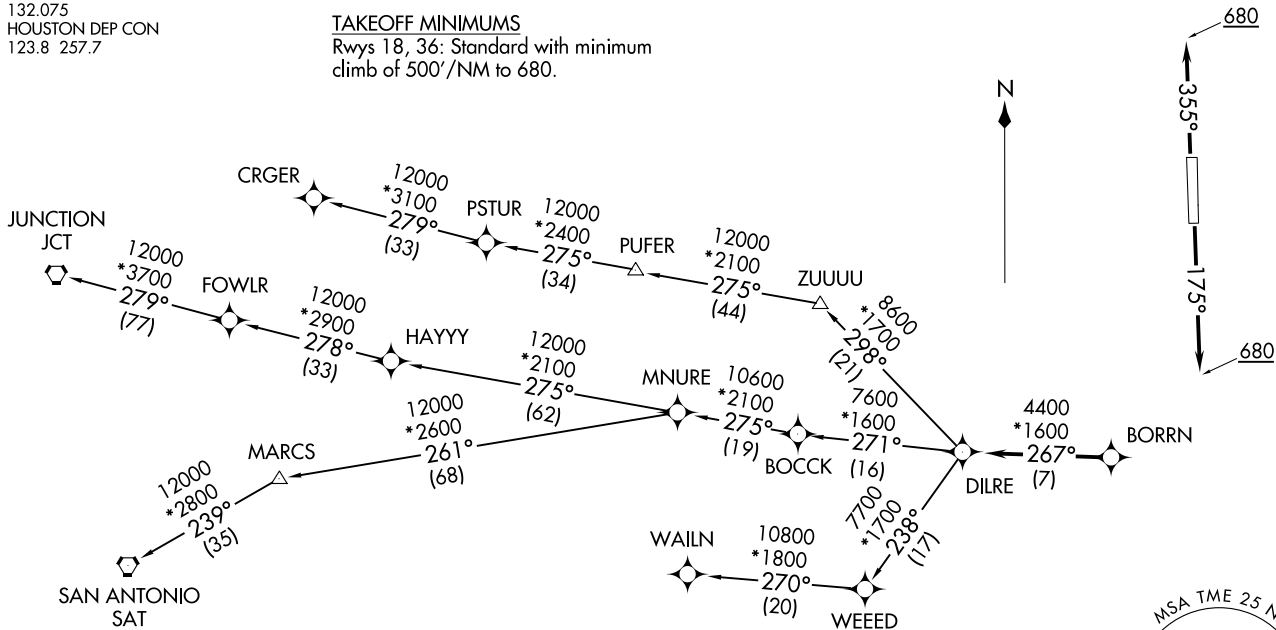
RADAR required.

**TOP ALTITUDE:
ASSIGNED BY ATC**

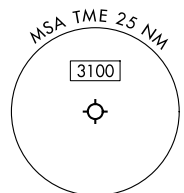
ATIS
119.525
CTAF
126.975
CLNC DEL
132.075
HOUSTON DEP CON
123.8 257.7

TAKEOFF MINIMUMS

Rwys 18, 36: Standard with minimum
climb of 500'/NM to 680.



NOTE: CRGER-TRANSITION ATC assigned only
for aircraft departing 54T, AXH, EFD, GLS,
HPY, IWS, LBX, LVJ, SGR, TME, T00, T41.



NOTE: Chart not to scale.

(CONTINUED ON FOLLOWING PAGE)

BORRN SIX DEPARTURE (RNAV)
(BORRN6.BORRN) 30NOV23

HOUSTON, TEXAS
HOUSTON EXEC (TME)

(BORRN6.BORRN) 25051
BORRN SIX DEPARTURE (RNAV)

HOUSTON EXEC (TME)
HOUSTON, TEXAS

AI-10328 (FAA)

BORRN SIX DEPARTURE (RNAV)



DEPARTURE ROUTE DESCRIPTION

TAKEOFF RUNWAY 18: Climb on heading 175° to 680, for RADAR vectors to BORRN, thence. . . .

TAKEOFF RUNWAY 36: Climb on heading 355° to 680, for RADAR vectors to BORRN, thence. . . .

. . . .on track 267° to DILRE, then on (transition). Maintain ATC assigned altitude. Expect filed altitude 10 minutes after departure.

CRGER TRANSITION (BORRN6.CRGER)

JUNCTION TRANSITION (BORRN6.JCT)

MNURE TRANSITION (BORRN6.MNURE)

SAN ANTONIO TRANSITION (BORRN6.SAT)

WAILN TRANSITION (BORRN6.WAILN)

SC-5, 16 APR 2026 to 14 MAY 2026

SC-5, 16 APR 2026 to 14 MAY 2026