

(CRIED1.CRIED) 24193

CRIED ONE DEPARTURE

AL-10328 (FAA)

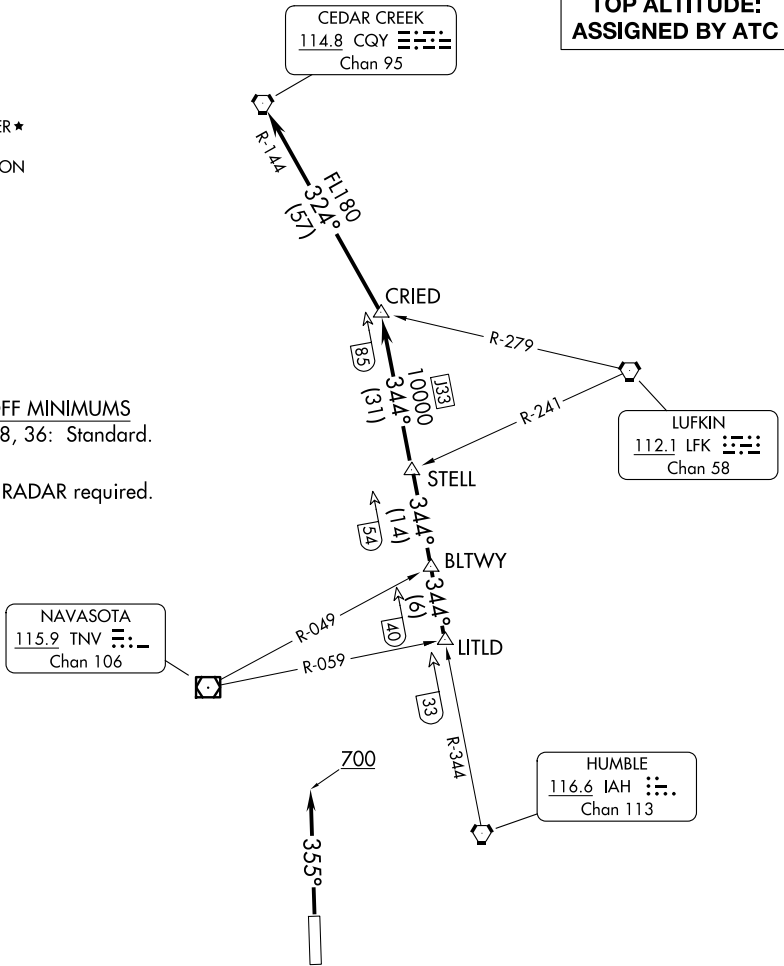
HOUSTON EXEC (TME)
HOUSTON, TEXAS

ATIS
119.525
CLNC DEL
132.075
GND CON
132.075
EXECUTIVE TOWER ★
126.975 (CTAF)
HOUSTON DEP CON
123.8 257.7

**TOP ALTITUDE:
ASSIGNED BY ATC**

TAKEOFF MINIMUMS
Rwys 18, 36: Standard.

NOTE: RADAR required.



SC-5, 16 APR 2026 to 14 MAY 2026

SC-5, 16 APR 2026 to 14 MAY 2026

NOTE: Chart not to scale.

DEPARTURE ROUTE DESCRIPTION

TAKEOFF RUNWAY 18: When entering controlled airspace, climb on assigned heading for RADAR vectors to LITLD INT. Maintain ATC assigned altitude. Expect filed altitude 10 minutes after departure, thence. . . .

TAKEOFF RUNWAY 36: Climb on heading 355° to 700 before turning. When entering controlled airspace, climb on assigned heading for RADAR vectors to LITLD INT. Maintain ATC assigned altitude. Expect filed altitude 10 minutes after departure, thence. . . .

. . . . on IAH R-344 to STELL INT, then on IAH R-344 to CRIED INT, then left turn on CQY R-144 to CQY VORTAC.

CRIED ONE DEPARTURE

(CRIED1.CRIED) 07OCT21

HOUSTON, TEXAS
HOUSTON EXEC (TME)