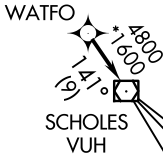
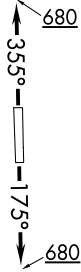


# WATFO SIX DEPARTURE (RNAV)

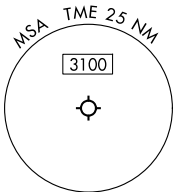
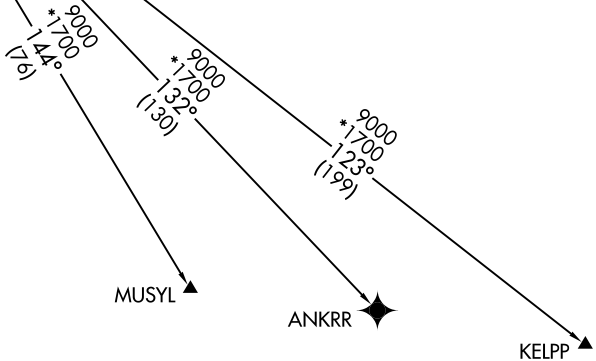
RNAV 1 - DME/DME/IRU or GPS.  
RADAR required.

**TOP ALTITUDE:  
ASSIGNED BY ATC**

ATIS  
119.525  
CTAF  
126.975  
CLNC DEL  
132.075  
HOUSTON DEP CON  
123.8 257.7



TAKEOFF MINIMUMS:  
Rwy 18, 36: Standard with minimum  
climb of 500' /NM to 680.



NOTE: Chart not to scale.

## DEPARTURE ROUTE DESCRIPTION

TAKEOFF RUNWAY 18: Climb on heading 175° to 680, for RADAR vectors to WATFO, thence. . . .

TAKEOFF RUNWAY 36: Climb on heading 355° to 680, for RADAR vectors to WATFO, thence. . . .

. . . .on track 141° to VUH VOR/DME, then on (transition). Maintain ATC assigned altitude. Expect filed altitude 10 minutes after departure.

ANKRR TRANSITION (WATFO6.ANKRR)

KELPP TRANSITION (WATFO6.KELPP)

MUSYL TRANSITION (WATFO6.MUSYL)