

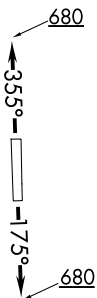
WYLSN EIGHT DEPARTURE (RNAV)

ATIS
 119.525
 CLNC DEL
 132.075
 GND CON
 132.075
 EXECUTIVE TOWER*
 126.975 (CTAF)
 HOUSTON DEP CON
 123.8 257.7

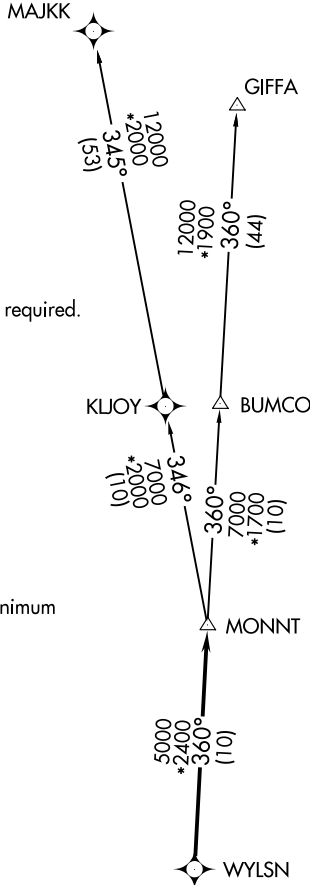
NOTE: RADAR required.
 NOTE: DME/DME/IRU or GPS required.
 NOTE: RNAV 1.

TAKEOFF MINIMUMS

Rwy 18, 36: Standard with minimum climb of 500' per NM to 680.



NOTE: Chart not to scale.



**TOP ALTITUDE:
 ASSIGNED BY ATC**

DEPARTURE ROUTE DESCRIPTION

TAKEOFF RUNWAY 18: Climb on heading 175° to 680 for RADAR vectors to WYLSN, then...

TAKEOFF RUNWAY 36: Climb on heading 355° to 680 for RADAR vectors to WYLSN, then...

...on track 360° to MONNT, then on (transition).
 Maintain ATC assigned altitude. Expect filed altitude 10 minutes after departure.

GIFFA TRANSITION (WYLSN8.GIFFA)
MAJJK TRANSITION (WYLSN8.MAJJK)

SC-5, 16 APR 2026 to 14 MAY 2026

SC-5, 16 APR 2026 to 14 MAY 2026