

WAAS CH <b>99409</b> W28A	APP CRS <b>277°</b>	Rwy Ldg <b>4300</b> TDZE <b>129</b> Apt Elev <b>135</b>
---------------------------------	------------------------	---

# RNAV (GPS) RWY 28

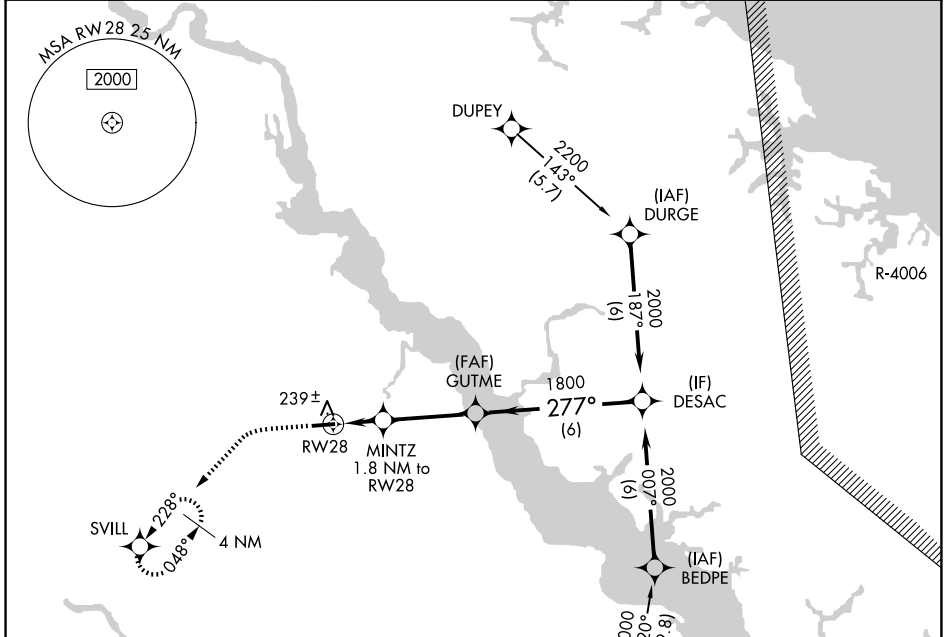
TAPPAHANNOCK/ESSEX COUNTY (XSA)

RNP APCH - GPS.

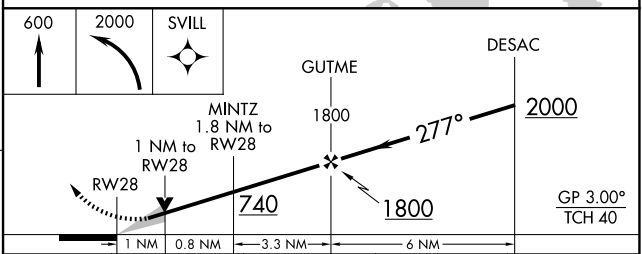
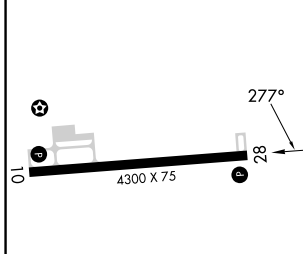
⚠ For uncompensated Baro-VNAV systems, LNAV/VNAV NA below -15°C or above 54°C.

MISSED APPROACH: Climb to 600 then climbing left turn to 2000 direct SVILL and hold.

AWOS-3 <b>125.775</b>	POTOMAC APP CON <b>126.4 282.375</b>	UNICOM <b>122.8 (CTAF) 0</b>
--------------------------	---	---------------------------------



ELEV 135	TDZE 129
----------	----------



CATEGORY	A	B	C	D
LPV DA	379-1	250 (300-1)		NA
LNAV/VNAV DA	402-1	273 (300-1)		NA
LNAV MDA	500-1	371 (400-1)		NA
CIRCLING	580-1 445 (500-1)	640-1 505 (600-1)	820-2 685 (700-2)	NA

REIL Rwy 10 and 28  
MIRL Rwy 10-28 0

NE-3, 16 APR 2026 to 14 MAY 2026

NE-3, 16 APR 2026 to 14 MAY 2026