

LOC/DME I-SUZ 111.95 Chan 56(Y)	APP CRS 019°	Rwy Ldg 5002
		TDZE 389
		Apt Elev 389

ILS or LOC RWY 2

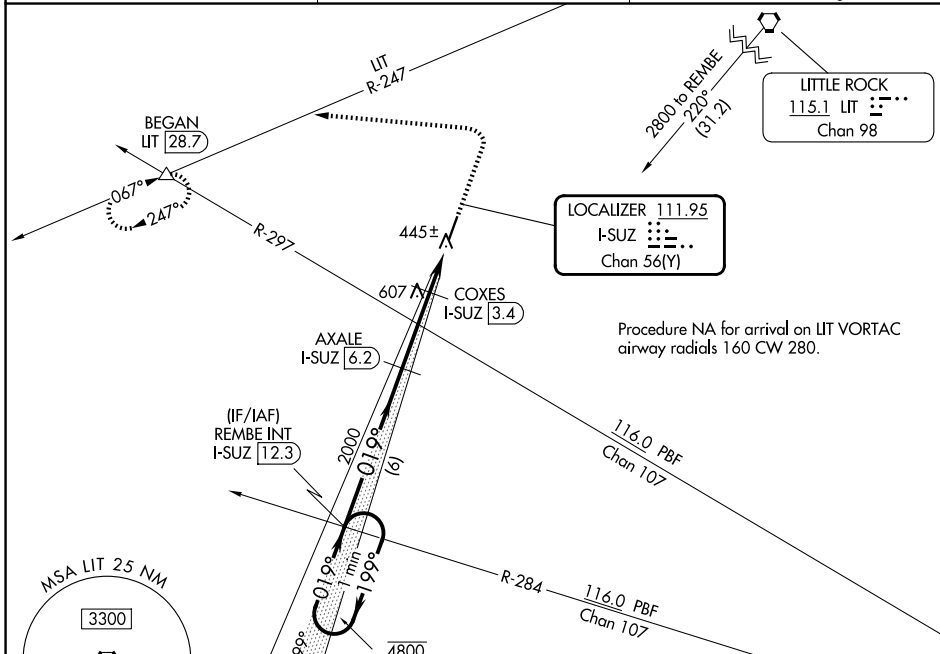
SALINE COUNTY RGNL (SUZ)

DME required for LOC only.

▲ Rwy 2 helicopter visibility reduction below 3/4 SM NA.

MISSED APPROACH: Climb to 1100 then climbing left turn to 3000 on heading 275° and LIT VORTAC R-247 to BEGAN INT/LIT 28.7 DME and hold, continue climb-in-hold to 3000.

AWOS-3 132.125	LITTLE ROCK APP CON 119.5 306.2	UNICOM 122.8 (CTAF) 0
--------------------------	---	---------------------------------



One Minute Holding Pattern

VGSI and ILS glidepath not coincident (VGSI Angle 3.00/TCH 56).

REMBE INT I-SUZ 12.3

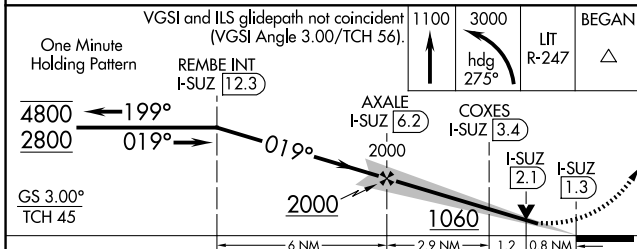
1100

3000

hdg 275°

LIT R-247

BEGAN



CATEGORY	A	B	C	D
S-ILS 2		639-3/4	250 (300-3/4)	
S-LOC 2	700-1	311 (400-1)	700-7/8	311 (400-7/8)
CIRCLING	980-1 591 (600-1)	1080-1 691 (700-1)	1200-2 1/2 811 (900-2 1/2)	1200-2 3/4 811 (900-2 3/4)

ELEV 389	TDZE 389
REIL Rwys 2 and 20	
MIRL Rwy 2-20	

Diagram of Runway 20 showing a 5002 x 100 ft runway with a 019° heading. The diagram includes a 20-foot wide runway edge and a 2-foot wide centerline.

FAF to MAP 4.9 NM					
Knots	60	90	120	150	180
Min:Sec	4:54	3:16	2:27	1:58	1:38

SC-1, 16 APR 2026 to 14 MAY 2026

SC-1, 16 APR 2026 to 14 MAY 2026