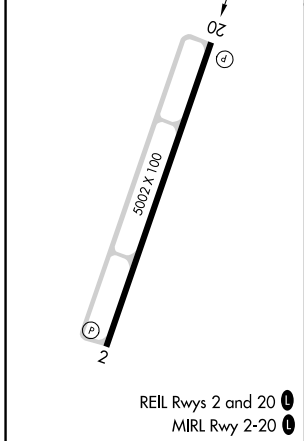
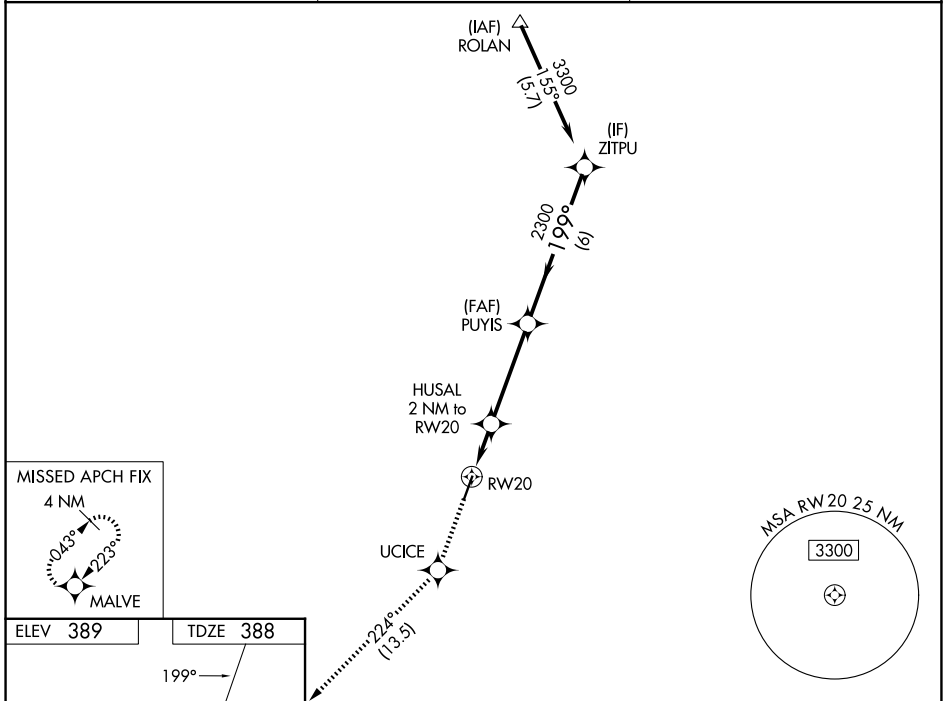


WAAS CH <b>40309</b> <b>W20A</b>	APP CRS <b>199°</b>	Rwy Ldg <b>5002</b> TDZE <b>388</b> Apt Elev <b>389</b>
----------------------------------------	------------------------	---------------------------------------------------------------

# RNAV (GPS) RWY 20

SALINE COUNTY RGNL (SUZ)

RNP APCH - GPS.		MISSED APPROACH: Climb to 2100 direct UCICE and on track 224° to MALVE and hold.
<p><b>⚠</b> Rwy 20 helicopter visibility reduction below 3/4 SM NA. For uncompensated Baro-VNAV systems, LNAV/VNAV NA below -15°C and above 54°C.</p>		
AWOS-3 <b>132.125</b>	LITTLE ROCK APP CON <b>119.5 306.2</b>	UNICOM <b>122.8 (CTAF) 0</b>



ELEV 389	TDZE 388	2100 UCICE ↑  tr 224°  MALVE		ZITPU
HUSAL 2 NM to RW20 1.4 NM to RW20 1080		PUYIS 2300 199° 2300	3300 GP 3.00° TCH 60	
1.4 NM    0.6 NM    3.8 NM    6 NM				
CATEGORY	A	B	C	D
LPV DA		642-3/4	254 (300-3/4)	
LNAV/VNAV DA		850-1 3/8    462 (500-1 3/8)		
LNAV MDA	900-1	512 (600-1)		900-1 3/8    512 (600-1 3/8)
CIRCLING	980-1 591 (600-1)	1080-1 691 (700-1)	1200-2 1/2 811 (900-2 1/2)	1200-2 3/4 811 (900-2 3/4)

SC-1, 16 APR 2026 to 14 MAY 2026

SC-1, 16 APR 2026 to 14 MAY 2026