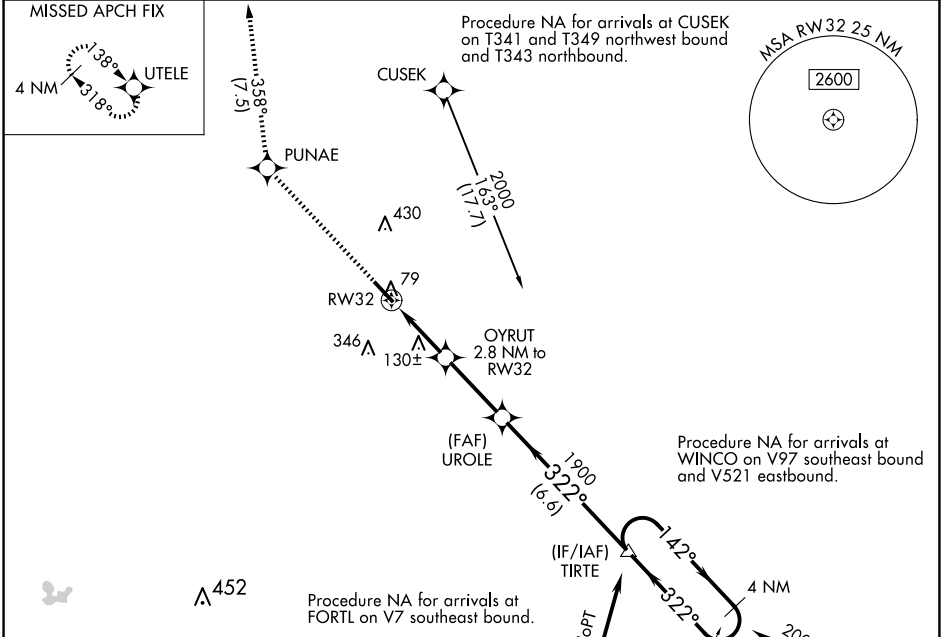


APP CRS	Rwy Idg	<b>5125</b>
<b>322°</b>	TDZE	<b>20</b>
	Apt Elev	<b>20</b>

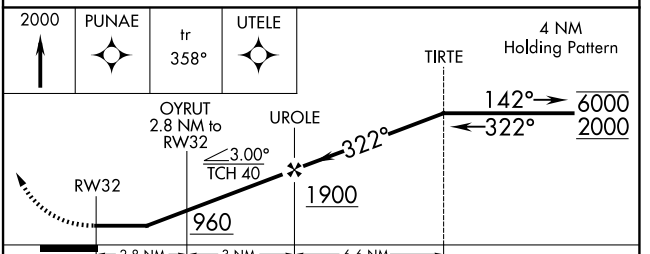
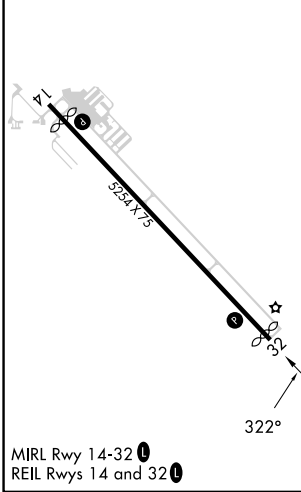
# RNAV (GPS) RWY 32

LA BELLE MUNI (X14)

RNP APCH - GPS.		MISSED APPROACH: Climb to 2000 direct PUNAE and on track 358° to UTELE and hold.
▼	Rwy 32 helicopter visibility reduction below 3/4 SM NA.	
▲	NA Use RSW altimeter setting.	
RSW ASOS	FORT MYERS APP CON *	UNICOM
<b>124.65</b>	<b>126.8</b>	<b>122.8 (CTAF) 0</b>



ELEV 20	<b>D</b>	TDZE 20
---------	----------	---------



CATEGORY	A	B	C	D
LNNAV MDA	480-1	460 (500-1)	480-1 3/8	460 (500-1 3/8)
CIRCLING	580-1	560 (600-1)	800-2 1/4 780 (800-2 1/4)	800-2 1/2 780 (800-2 1/2)

SE-3, 16 APR 2026 to 14 MAY 2026

SE-3, 16 APR 2026 to 14 MAY 2026