

WAAS CH <b>58238</b> <b>W01A</b>	APP CRS <b>354°</b>	Rwy Ldg TDZE <b>7637</b> Apt Elev <b>7664</b>
----------------------------------------	------------------------	-----------------------------------------------------------

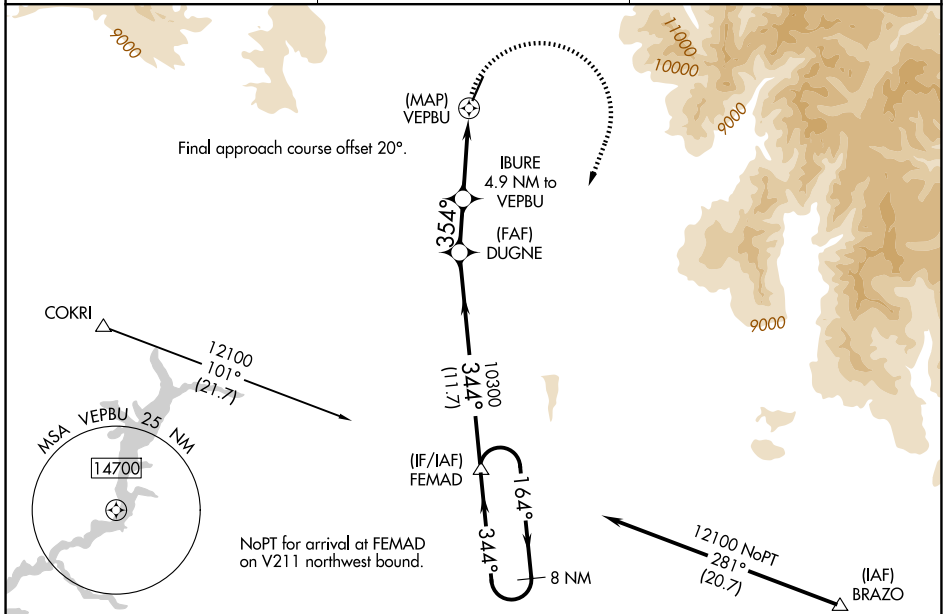
# RNAV (GPS) RWY 1

STEVENS FLD (PSO)

**⚠** Circling to Rwy 19 NA at night. DME/DME RNP-0.3 NA. Helicopter visibility reduction below 3/4 SM NA. When local altimeter setting not received, use Durango altimeter setting and increase all MDA 220 feet and LP and LNAV visibility Cat B 1/4 mile and Cat C 3/4 mile, and Circling Cats A/B 1/4 mile.

**⚠** MISSED APPROACH: Climbing right turn to 12100 direct FEMAD and hold.

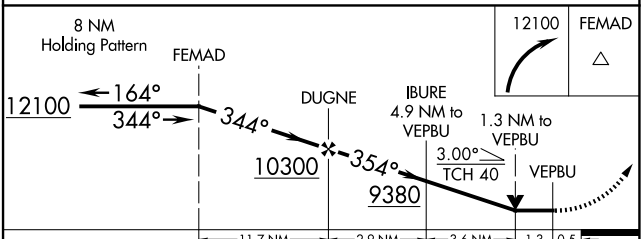
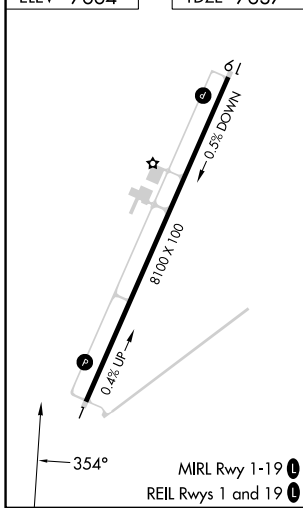
AWOS-3PT <b>127.175</b>	DENVER CENTER <b>118.575 348.7</b>	UNICOM <b>122.7 (CTAF) 0</b>
----------------------------	---------------------------------------	---------------------------------



SW-1, 16 APR 2026 to 14 MAY 2026

SW-1, 16 APR 2026 to 14 MAY 2026

ELEV 7664	TDZE 7637
-----------	-----------



CATEGORY	A	B	C	D
LP MDA	8240-1	603 (600-1)	8240-1 3/4 603 (600-1 3/4)	NA
LNAV MDA	8280-1	643 (700-1)	8280-1 7/8 643 (700-1 7/8)	NA
CIRCLING	8420-1 756 (800-1)	8480-1 1/4 816 (900-1 1/4)	8940-3 1276 (1300-3)	NA