

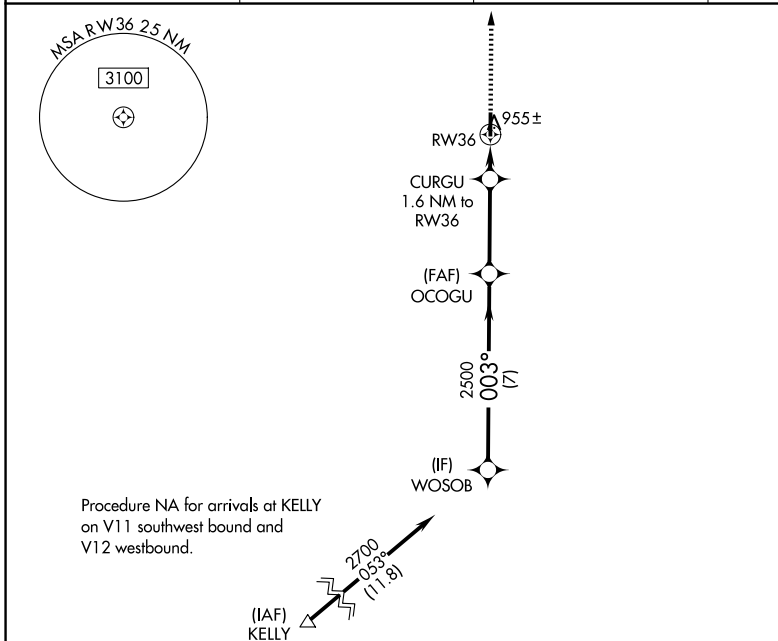
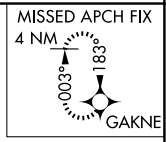
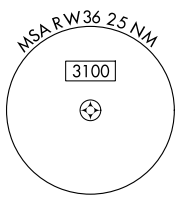
WAAS CH 45833 W36A	APP CRS 003°	Rwy Ldg TDZE Apt Elev	4400 884 898
--	------------------------	-----------------------------	---

RNAV (GPS) RWY 36

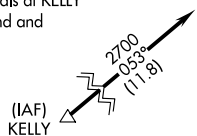
HENDRICKS COUNTY-GORDON GRAHAM FLD (2R2)

NA	Baro-VNAV NA. DME/DME RNP-0.3 NA. Use Indianapolis Intl altimeter setting. Helicopter visibility reduction below 3/4 SM NA.	MISSED APPROACH: Climb to 2700 direct GAKNE and hold.
----	---	---

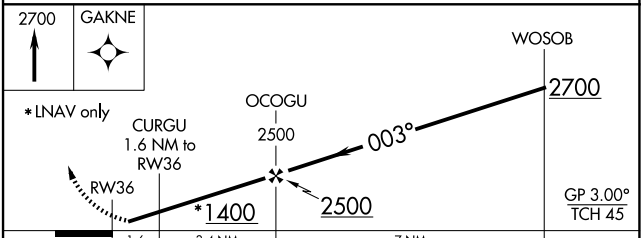
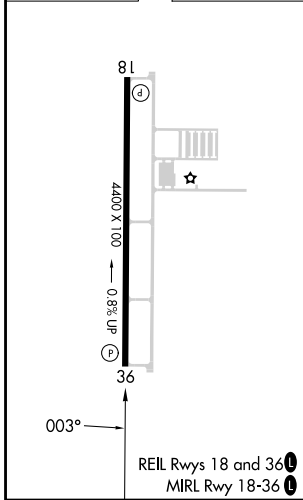
AWOS-3PT 118.025	IND ASOS 134.25	INDIANAPOLIS APP CON 121.1	UNICOM 122.7 (CTAF)
----------------------------	---------------------------	--------------------------------------	-------------------------------



Procedure NA for arrivals at KELLY on V11 southwest bound and V12 westbound.



ELEV 898	TDZE 884
----------	----------



CATEGORY	A	B	C	D
LPV DA	1168-7/8	284 (300-7/8)		NA
LNAV/VNAV DA	1168-7/8	284 (300-7/8)		NA
LNAV MDA	1240-1	356 (400-1)		NA
CIRCLING	1380-1 482 (500-1)	1560-1 662 (700-1)	1600-2 702 (800-2)	NA

RNAV (GPS) RWY 36

EC-2, 16 APR 2026 to 14 MAY 2026

EC-2, 16 APR 2026 to 14 MAY 2026