

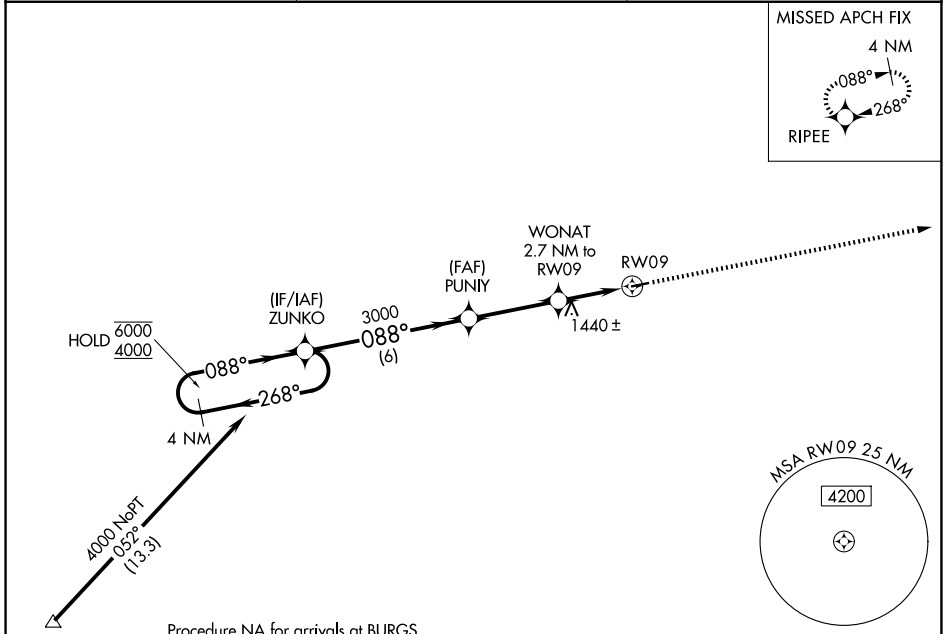
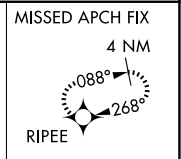
APP CRS	Rwy Ldg	<b>3500</b>
<b>088°</b>	TDZE	<b>1069</b>
	Apt Elev	<b>1069</b>

# RNAV (GPS) Z RWY 9

GREENE COUNTY (WAY)

RNP APCH - GPS.	<p><b>▼</b> Procedure NA at night. Rwy 9 helicopter visibility reduction below 1 SM NA. Use Washington altimeter setting.</p> <p><b>▲</b> NA</p>	<p>MISSED APPROACH: Climb to 4000 direct RIPEE and hold, continue climb-in-hold to 4000.</p>
-----------------	--	--

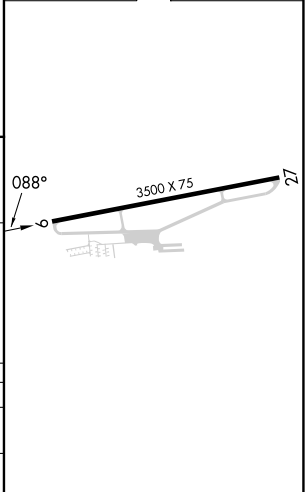
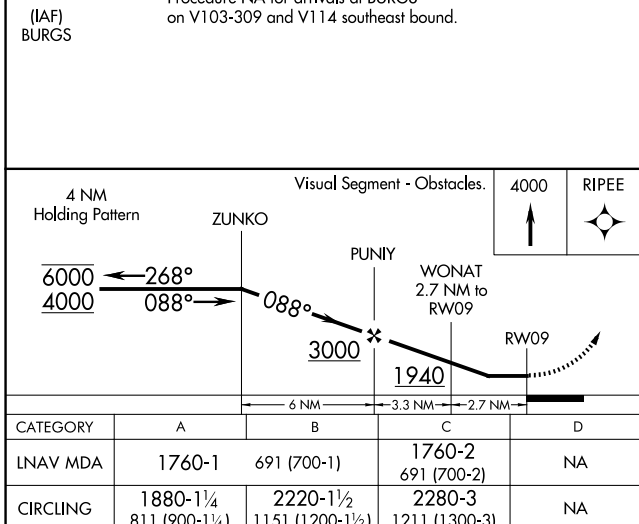
AFJ AWOS-3PT <b>119.175</b>	CLARKSBURG APP CON* <b>121.15 284.65</b>	UNICOM <b>122.8 (CTAF)</b>
--------------------------------	---	-------------------------------



NE-4, 16 APR 2026 to 14 MAY 2026

NE-4, 16 APR 2026 to 14 MAY 2026

ELEV 1069	TDZE 1069
-----------	-----------



WAYNESBURG, PENNSYLVANIA	GREENE COUNTY (WAY)
Amdt 1B 21MAR24	RNAV (GPS) Z RWY 9
39°54'N-80°08'W	