

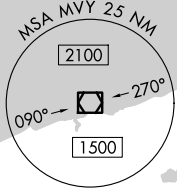
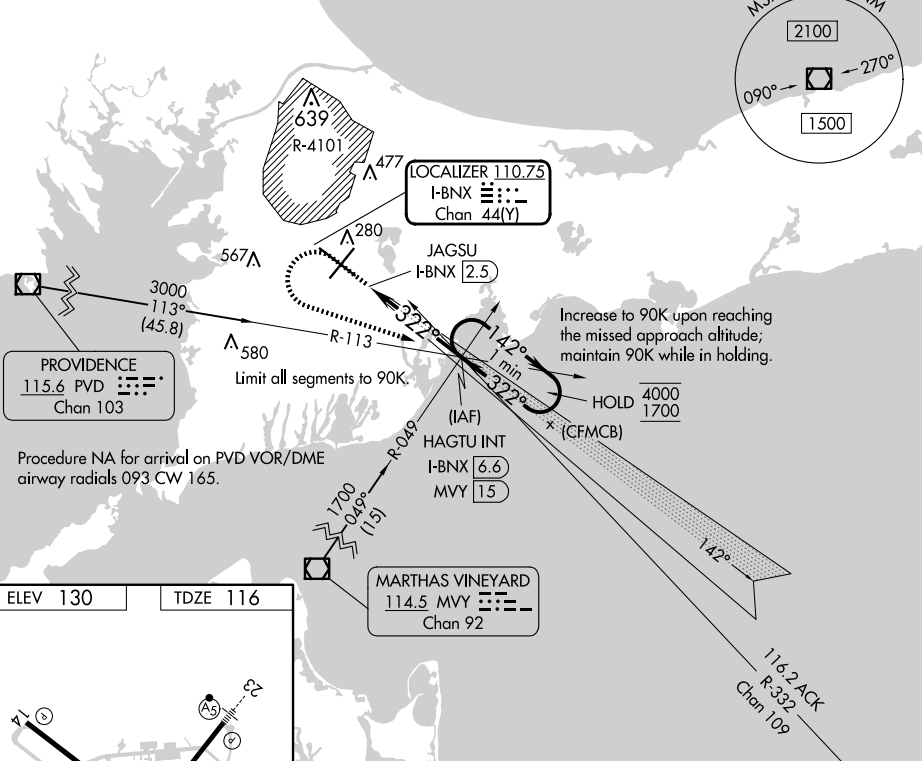
LOC/DME I-BNX <b>110.75</b> Chan <b>44(Y)</b>	APP CRS <b>322°</b>	Rwy Idg TDZE <b>116</b> Apt Elev <b>130</b>	<b>9501</b>
-----------------------------------------------------	------------------------	---------------------------------------------------	-------------

# COPTER ILS Y or LOC Y RWY 32

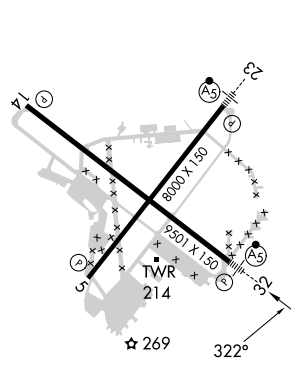
CAPE COD COAST GUARD AIR STATION (F'MH)

<p><b>NA</b> U.S. Coast Guard use only. For inop ALS, increase visibility to RVR 2400.</p>	<p>MALS R </p>	<p>MISSED APPROACH: Climb to 1400 then climbing left turn to 2000 on heading 123° and I-BNX localizer SE course to HAGTU INT/I-BNX 6.6 DME and hold.</p>
	<p>ATIS <b>120.475 236.825</b></p>	<p>BOSTON APP CON <b>118.2 284.6</b></p>
		<p>GND CON <b>124.15 275.8</b></p>

**NOT FOR CIVIL USE**



ELEV 130	TDZE 116
----------	----------



REIL Rws 5 and 14  
HIRL Rws 5-23 and 14-32

FAF to MAP 4.2 NM					
Knots	45	60	75	90	105
Min:Sec	5:36	4:12	3:22	2:48	2:24

1400	2000	I-BNX SE crs	HAGTU INT	HAGTU INT I-BNX 6.6 MVA 15	One Minute Holding Pattern
↑	hdg 123°				
Use I-BNX DME when on the localizer course.					
CATEGORY		COPTER			
H-ILS 32		216/12 100 (100-¼)			
H-LOC 32		520/12 404 (400-¼)			

NE-1, 16 APR 2026 to 14 MAY 2026

NE-1, 16 APR 2026 to 14 MAY 2026