

LOC/DME I-BNX 110.75 Chan 44(Y)	APP CRS 322°	Rwy Idg TDZE Apt Elev	9501 116 130
--	------------------------	-----------------------------	---

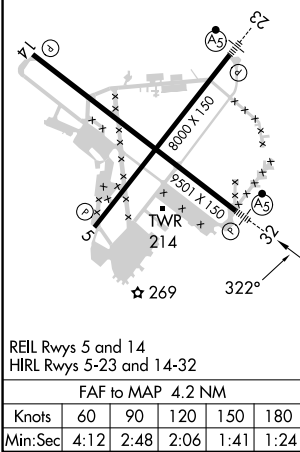
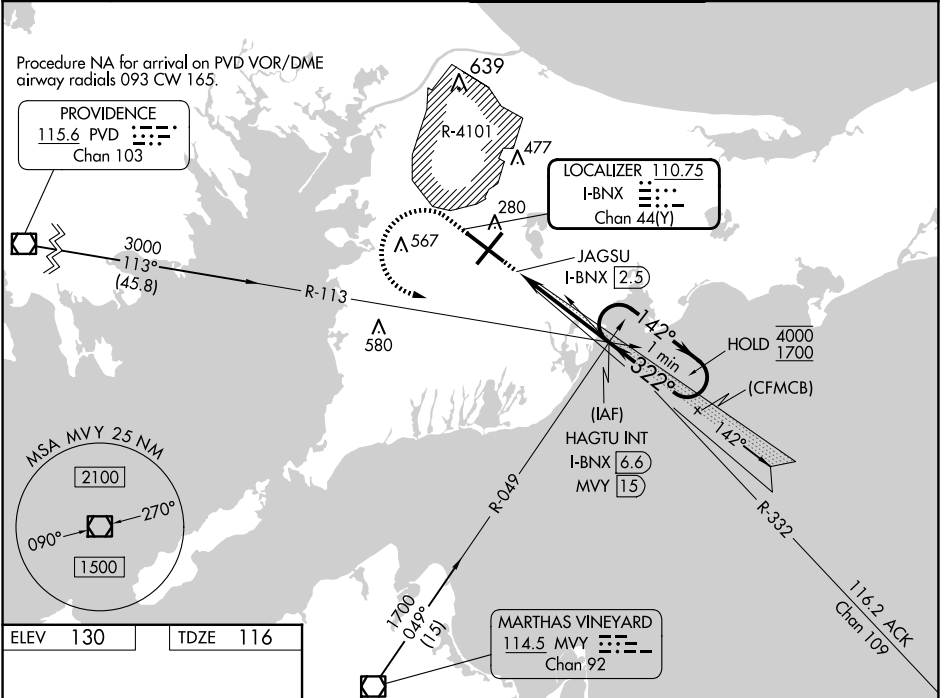
ILS Z or LOC Z RWY 32

CAPE COD COAST GUARD AIR STATION (F'MH)

⚠ Circling NA northeast of Rwy 14 and northwest of Rwy 23.
For inop ALS, increase S-LOC 32 Cats C/D visibility to RVR 6000.
*RVR 1800 authorized with use of FD or AP or HUD to DA.

MALSRS
MISSED APPROACH: Climb to 1400 then climbing left turn to 2000 on heading 112° and I-BNX localizer SE course to HAGTU INT/I-BNX 6.6 DME and hold.

ATIS 120.475 236.825	BOSTON APP CON 118.2 284.6	COAST GUARD TOWER 128.425 291.1	GND CON 124.15 275.8
--------------------------------	--------------------------------------	---	--------------------------------



NE-1, 16 APR 2026 to 14 MAY 2026

NE-1, 16 APR 2026 to 14 MAY 2026