

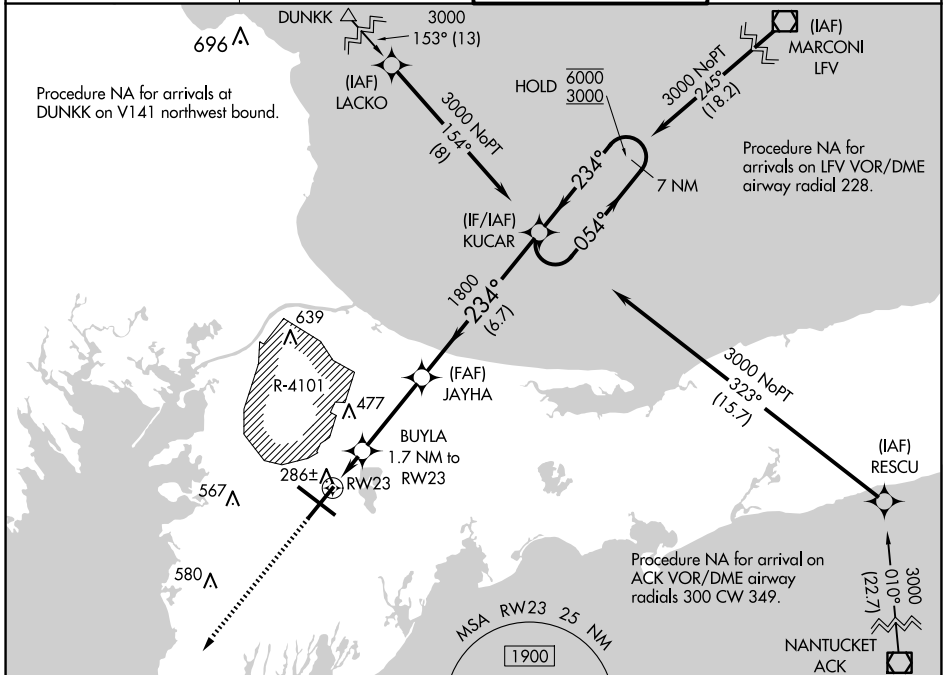
WAAS CH <b>97337</b> <b>W23A</b>	APP CRS <b>234°</b>	Rwy Idg TDZE Apt Elev	<b>8000</b> <b>126</b> <b>130</b>
--	------------------------	-----------------------------	---

# RNAV (GPS) RWY 23

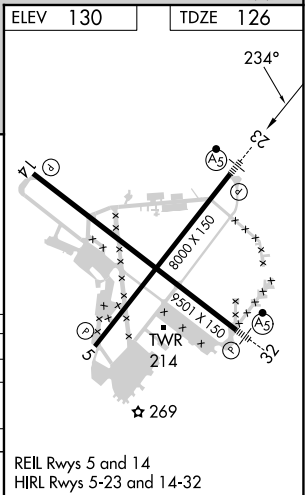
CAPE COD COAST GUARD AIR STATION (F'MH)

<b>RNP APCH.</b> For uncompensated Baro-VNAV systems, procedure NA below -15°C or above 54°C. Circling NA NE of Rwy 14 and NW of Rwy 23. For inop ALS, increase LNAV/VNAV all Cats visibility to RVR 5500 and LNAV Cats C and D visibility to RVR 6000.	<b>MALSR</b> 	<b>MISSED APPROACH:</b> Climb to 3000 direct GLESO and hold.
---	------------------	---

<b>ATIS</b> <b>120.475 236.825</b>	<b>BOSTON APP CON</b> <b>118.2 284.6</b>	<b>COAST GUARD TOWER</b> <b>128.425 291.1</b>	<b>GND CON</b> <b>124.15 275.8</b>
---------------------------------------	---	--	---------------------------------------



	ELEV 130	TDZE 126					
	3000	GLESO	*LNAV only.				
		RWY 23	BUYLA	JAYHA	KUCAR	7 NM Holding Pattern	
			1.7 NM to RWY 23	1800	1800	054° → 6000 ← 234° 3000	
			*1.1 NM to RWY 23	720*	1800	GP 3.00° TCH 54	
			← 1.1 NM	← 0.6 NM	← 3.4 NM	← 6.7 NM	
CATEGORY	A	B	C	D			
LPV DA	326/24 200 (200-½)						
LNAV/VNAV DA	467/30 341 (400-¾)						
LNAV MDA	540/24	414 (500-½)	540/40	414 (500-¾)			
CIRCLING	580-1 450 (500-1)	640-1 510 (600-1)	900-2¼ 770 (800-2¼)	900-2½ 770 (800-2½)			



NE-1, 16 APR 2026 to 14 MAY 2026

NE-1, 16 APR 2026 to 14 MAY 2026