

WAAS CH <b>50133</b> <b>W11A</b>	APP CRS <b>105°</b>	Rwy Ldg TDZE Apt Elev	<b>3302</b> <b>1183</b> <b>1183</b>
--	------------------------	-----------------------------	---

# RNAV (GPS) RWY 11

PAYNESVILLE MUNI (PEX)

RNP APCH - GPS.

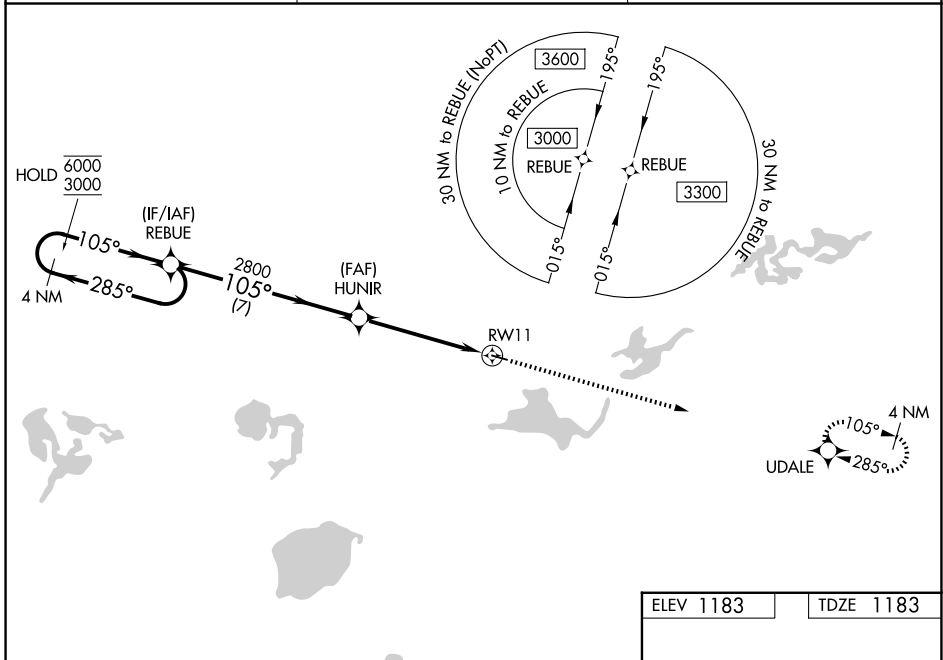
**⚠** Baro-VNAV and VDP NA when using Lf altimeter setting. For uncompensated Baro-VNAV systems, LNAV/VNAV NA below -17°C or above 54°C. When local altimeter setting not received, use Lf altimeter setting and increase LPV DA to 1434 feet; increase LNAV/VNAV DA to 1704 feet and all visibilities 1/8 SM. Increase all MDAs 60 feet and LNAV and Circling visibility Cat C 1/4 SM.

MISSED APPROACH:  
Climb to 3000 direct  
UDALE and hold.

AWOS-3PT  
**120.35**

MINNEAPOLIS CENTER  
**125.5 323.1**

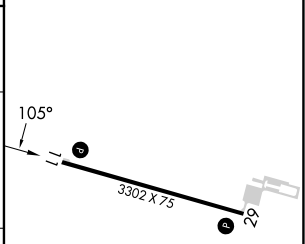
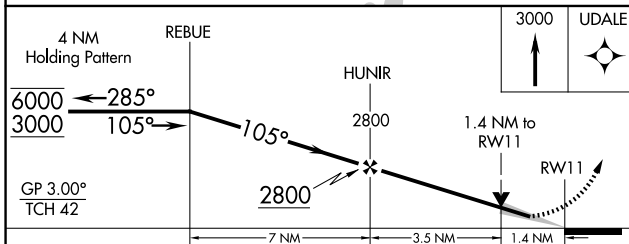
CTAF  
**122.9**



NC-1, 16 APR 2026 to 14 MAY 2026

NC-1, 16 APR 2026 to 14 MAY 2026

ELEV 1183	TDZE 1183
-----------	-----------



CATEGORY	A	B	C	D
LPV DA	1383-1 200 (200-1)			NA
LNAV/VNAV DA	1653-1 3/8 470 (500-1 3/8)			NA
LNAV MDA	1680-1 497 (500-1)	1680-1 3/8 497 (500-1 3/8)		NA
CIRCLING	1680-1 497 (500-1)	1760-1 577 (600-1)	1920-2 737 (800-2)	NA

MIRL Rwy 11-29  
REIL Rwy 11 and 29