

LOC/DME I-BBG 111.35 Chan 50(Y)	APP CRS 323°	Rwy Ldg 7140 TDZE 1302 Apt Elev 1302
--	------------------------	---

ILS or LOC RWY 32

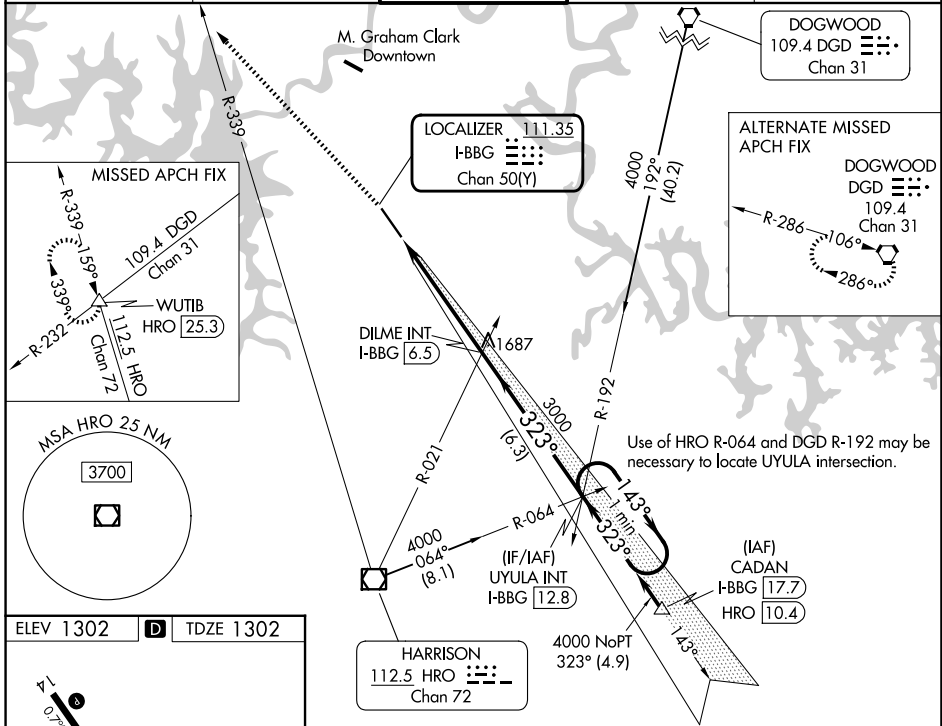
BRANSON (BBG)

NA Inop table does not apply. When local altimeter setting not received, use Harrison altimeter setting and increase S-ILS 32 DA to 1549 feet; increase all MDAs 60 feet and S-LOC 32 visibility Cat C/D and Circling visibility Cat C 1/4 SM. VDP NA when using Harrison altimeter setting.

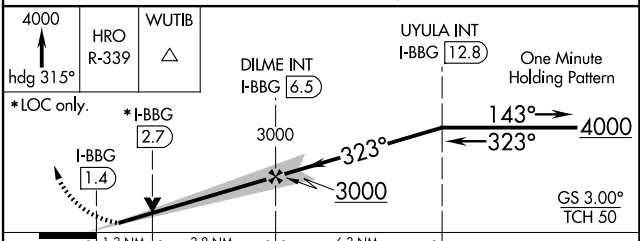
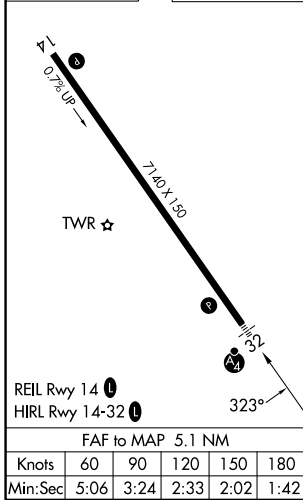
MALSF

MISSED APPROACH: Climb to 4000 on heading 315° and HRO VOR/DME R-339 to WUTIB INT/HRO 25.3 DME and hold.

ATIS 124.625	SPRINGFIELD APP CON 126.35	BRANSON TOWER* 128.15 (CTAF)	GND CON 118.4	UNICOM 122.95
-------------------------------	---	---	--------------------------------	--------------------------------



ELEV 1302	D	TDZE 1302
-----------	----------	-----------



CATEGORY	A	B	C	D
S-ILS 32		1502-1	200 (200-1)	
S-LOC 32		1760-1	458 (500-1)	
CIRCLING	1760-1 458 (500-1)	1900-1 598 (600-1)	2220-2 ³ / ₄ 918 (1000-2 ³ / ₄)	2220-3 918 (1000-3)

NC-3, 16 APR 2026 to 14 MAY 2026

NC-3, 16 APR 2026 to 14 MAY 2026