

|  |                        |   |
|--|------------------------|---|
| WAAS<br>CH <b>49238</b><br><b>W31A</b> | APP CRS<br><b>314°</b> | Rwy Ldg <b>4201</b><br>TDZE <b>1315</b><br>Apt Elev <b>1318</b> |
|--|------------------------|---|

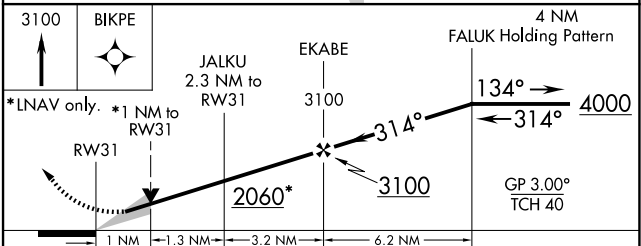
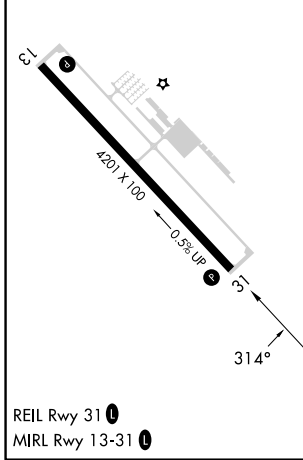
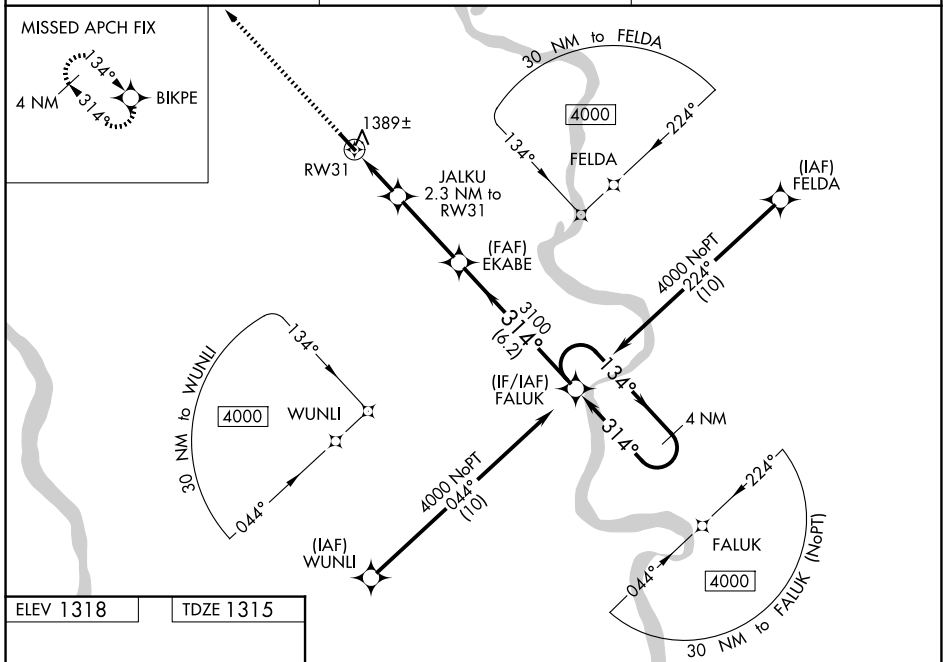
# RNAV (GPS) RWY 31

BLAIR EXEC (BTA)

**⚠** For uncompensated Baro-VNAV systems, LNAV/VNAV NA below -17°C (2°F) or above 54°C (130°F). Baro-VNAV and VDP NA when using Eppley Airfield altimeter setting. DME/DME RNP-0.3 NA. When local altimeter setting not received, use Eppley Airfield altimeter setting and increase LPV and LNAV/VNAV DA to 1638 and visibility to 1½ mile all Cats, increase all MDA 80 feet and LNAV Cat C visibility to 1½ mile.

MISSED APPROACH: Climb to 3100 direct BIKPE and hold.

|                          |  |                                  |
|--------------------------|--|----------------------------------|
| AWOS-3<br><b>120.225</b> | OMAHA APP CON<br><b>135.875 354.05</b> | UNICOM<br><b>123.05 (CTAF) 0</b> |
|--------------------------|--|----------------------------------|



| CATEGORY     | A                     | B                     | C                       | D  |
|--------------|-----------------------|-----------------------|-------------------------|----|
| LPV DA       | 1564-7/8              | 250 (300-7%)          |                         | NA |
| LNAV/VNAV DA | 1564-7/8              | 250 (300-7%)          |                         | NA |
| LNAV MDA     | 1640-1                | 326 (400-1)           |                         | NA |
| CIRCLING     | 1740-1<br>422 (500-1) | 1780-1<br>462 (500-1) | 1780-1½<br>462 (500-1½) | NA |

NC-2, 16 APR 2026 to 14 MAY 2026

NC-2, 16 APR 2026 to 14 MAY 2026