

APP CRS	Rwy Ldg	<b>4800</b>
<b>344°</b>	TDZE	<b>2724</b>
	Apt Elev	<b>2724</b>

# RNAV (GPS) RWY 34

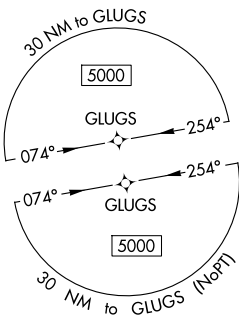
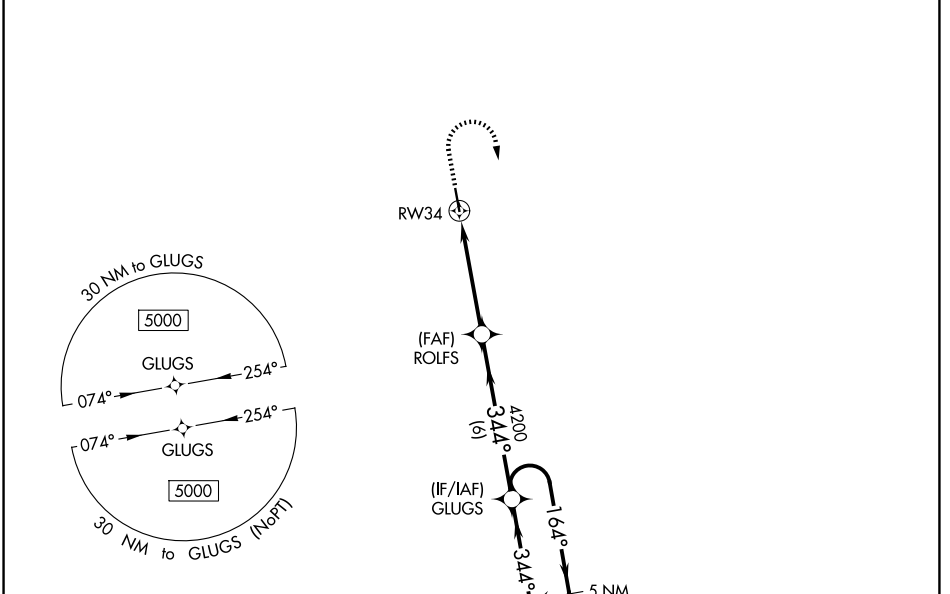
ROSEBUD SIOUX TRIBAL (SUO)

RNP APCH - GPS.

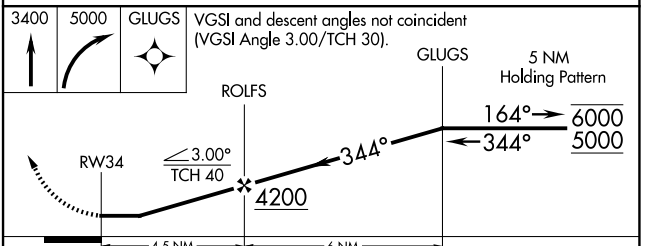
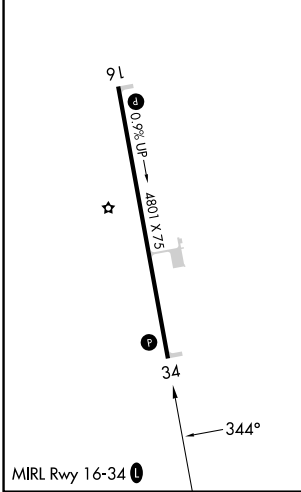
**NA** Rwy 34 helicopter visibility reduction below 1 SM NA. When local altimeter setting not received, use VTN altimeter setting. Procedure NA at night.

MISSED APPROACH: Climb to 3400 then climbing right turn to 5000 direct GLUGS and hold.

AWOS-3P <b>119,075</b>	VTN ASOS <b>118,075</b>	DENVER CENTER <b>127.95 338.2</b>	CTAF <b>122.9</b>
---------------------------	----------------------------	--------------------------------------	----------------------



ELEV 2724	<b>D</b>	TDZE 2724
-----------	----------	-----------



CATEGORY	A	B	C	D
LNAV MDA	3380-1	656 (700-1)	3380-1 $\frac{7}{8}$ 656 (700-1 $\frac{7}{8}$ )	NA
CIRCLING	3380-1	656 (700-1)	3440-2 716 (800-2)	NA

NC-1, 16 APR 2026 to 14 MAY 2026

NC-1, 16 APR 2026 to 14 MAY 2026