

APP CRS	Rwy Ldg	<b>3700</b>
<b>188°</b>	TDZE	<b>1762</b>
	Apt Elev	<b>1774</b>

# RNAV (GPS) RWY 19

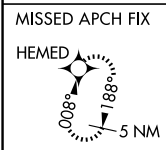
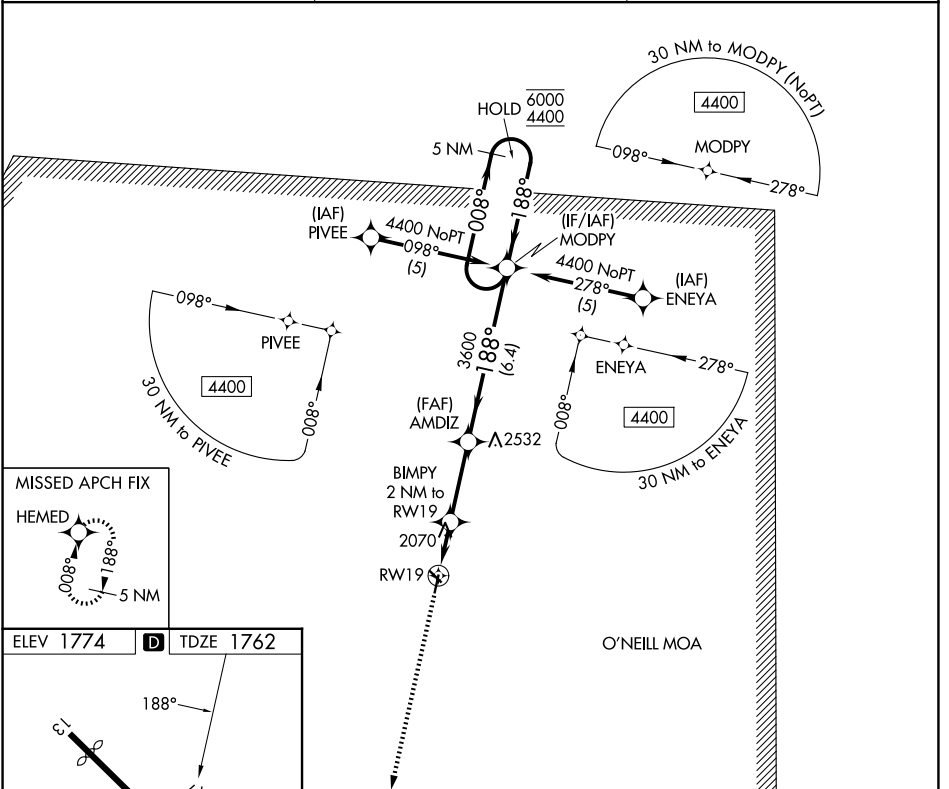
ANTELOPE COUNTY (4V9)

RNP APCH - GPS.

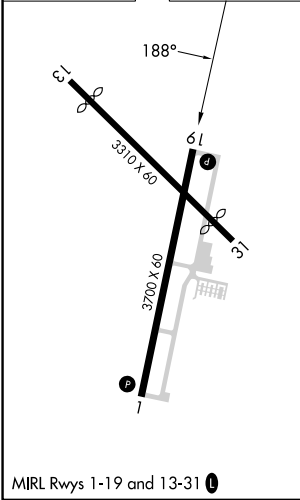
**⚠** Circling to Rwy 13, 31 NA at night. Rwy 19 helicopter visibility reduction below 3/4 SM NA. When local altimeter setting not received, use BVN altimeter setting and increase all MDAs 60 feet.

**⚠** MISSED APPROACH: Climb to 4400 direct HEMED and hold.

AWOS-3PT <b>119.275</b>	MINNEAPOLIS CENTER <b>128.0 257.95</b>	UNICOM <b>122.8 (CTAF) 0</b>
----------------------------	---	---------------------------------



ELEV 1774	<b>D</b>	TDZE 1762
-----------	----------	-----------



MIRL Rwy 1-19 and 13-31 0

4400	HEMED	Visual Segment - Obstacles.		MODPY	5 NM Holding Pattern
		AMDIZ			
		BIMPY 2 NM to RWY 19	AMDIZ		
		2500	3600		
		2 NM	3 NM	6.4 NM	
CATEGORY	A	B	C	D	
LNAV MDA	2320-1	558 (600-1)			NA
CIRCLING	2320-1	2380-1			NA
	546 (600-1)	606 (700-1)			

NC-2, 16 APR 2026 to 14 MAY 2026

NC-2, 16 APR 2026 to 14 MAY 2026