

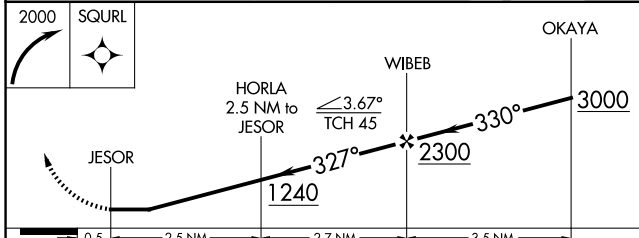
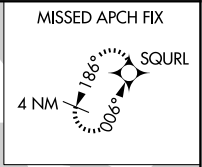
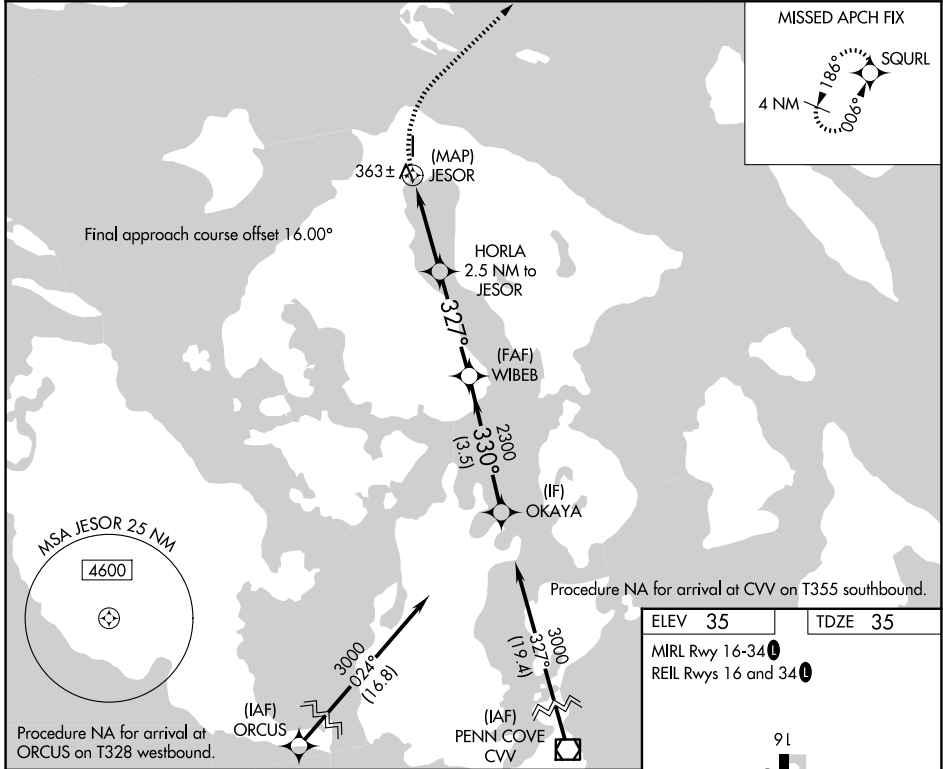
WAAS CH <b>99538</b> <b>W34A</b>	APP CRS <b>327°</b>	Rwy Ldg TDZE Apt Elev	<b>2901</b> <b>35</b> <b>35</b>
--	------------------------	-----------------------------	---------------------------------------

# RNAV (GPS) RWY 34

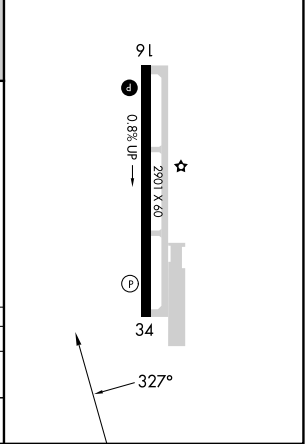
ORCAS ISLAND (ORS)

RNP APCH - GPS.		<p><b>⚠</b> Rwy 34 helicopter visibility reduction below 1 SM NA. Straight-in Rwy 34 NA at night, Circling Rwy 34 NA at night. When local altimeter setting not received, use FHR altimeter setting and increase all MDAs 40 feet and LP Cat B visibility ¼ mile.</p>	<p>MISSED APPROACH: Climbing right turn to 2000 direct SQURL and hold.</p>

AWOS-3P <b>135.425</b>	WHIDBEY APP CON <b>118.2 285.65 (S)</b>	VICTORIA APP CON <b>132.7 (N)</b>	CTAF <b>128.25</b>
---------------------------	--	--------------------------------------	-----------------------



ELEV 35	TDZE 35
MIRL Rwy 16-34	REIL Rwy 16 and 34



CATEGORY	A	B	C	D
LP MDA	760-1	725 (800-1)		NA
CIRCLING	1060-1¼ 1025 (1100-1¼)	1840-1½ 1805 (1900-1½)		NA

NW-1, 16 APR 2026 to 14 MAY 2026

NW-1, 16 APR 2026 to 14 MAY 2026