

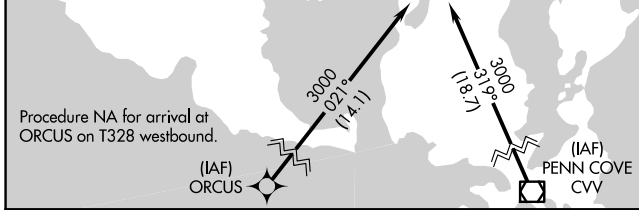
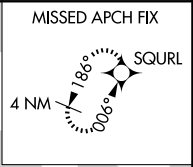
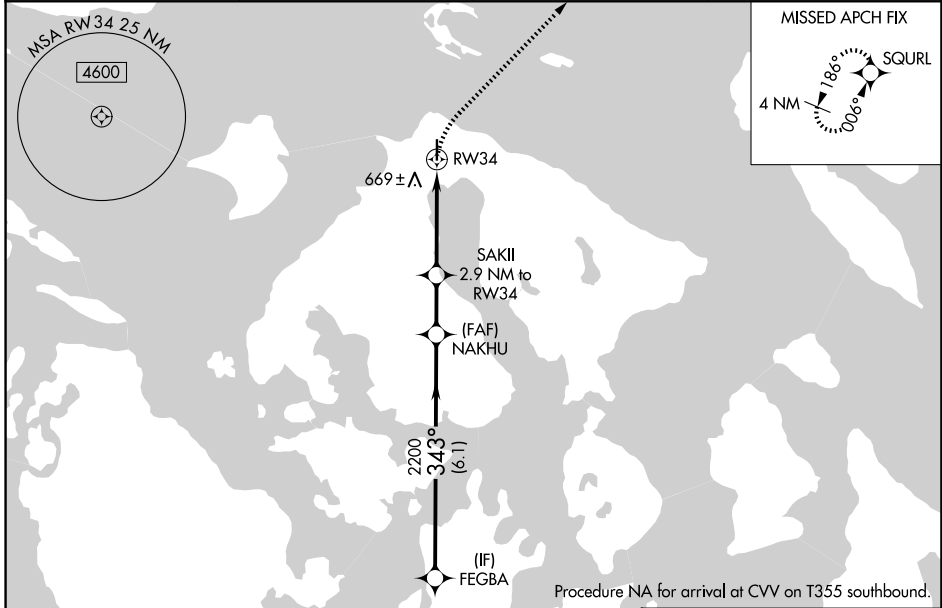
APP CRS 343°	Rwy Ldg TDZE Apt Elev	N/A N/A 35
------------------------	-----------------------------	---------------------------------------

RNAV (GPS)-A

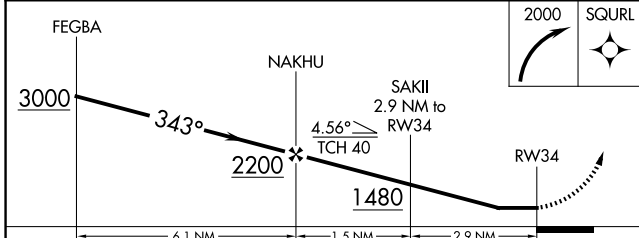
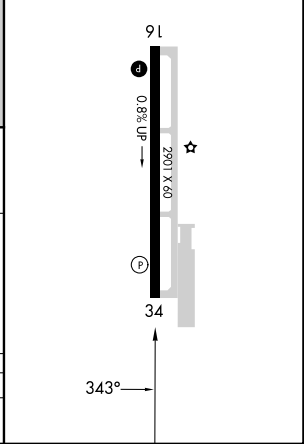
ORCAS ISLAND (ORS)

RNP APCH - GPS.	MISSED APPROACH: Climbing right turn to 2000 direct SQURL and hold.
<p>▼ Rwy 34 helicopter visibility reduction below 1 SM NA. Circling Rwy 34 NA at night. Rwy 16 helicopter visibility reduction below ¾ SM NA. When local altimeter setting not received, use FHR altimeter setting and increase all MDAs 40 feet.</p>	

AWOS-3P 135.425	WHIDBEY APP CON 118.2 285.65 (S)	VICTORIA APP CON 132.7 (N)	CTAF 128.25
---------------------------	--	--------------------------------------	-----------------------



ELEV 35
MRL Rwy 16-34
REL Rwys 16 and 34



CATEGORY	A	B	C	D
CIRCLING	1060-1¼ 1025 (1100-1¼)	1840-1½ 1805 (1900-1½)	NA	

NW-1, 16 APR 2026 to 14 MAY 2026

NW-1, 16 APR 2026 to 14 MAY 2026