

|  |                        |   |             |
|--|------------------------|---|-------------|
| WAAS<br>CH <b>62928</b><br><b>W28A</b> | APP CRS<br><b>280°</b> | Rwy Ldg<br>TDZE <b>928</b><br>Apt Elev <b>928</b> | <b>4549</b> |
|--|------------------------|---|-------------|

# RNAV (GPS) RWY 28

BOGGS FLD (USW)

RNP APCH.

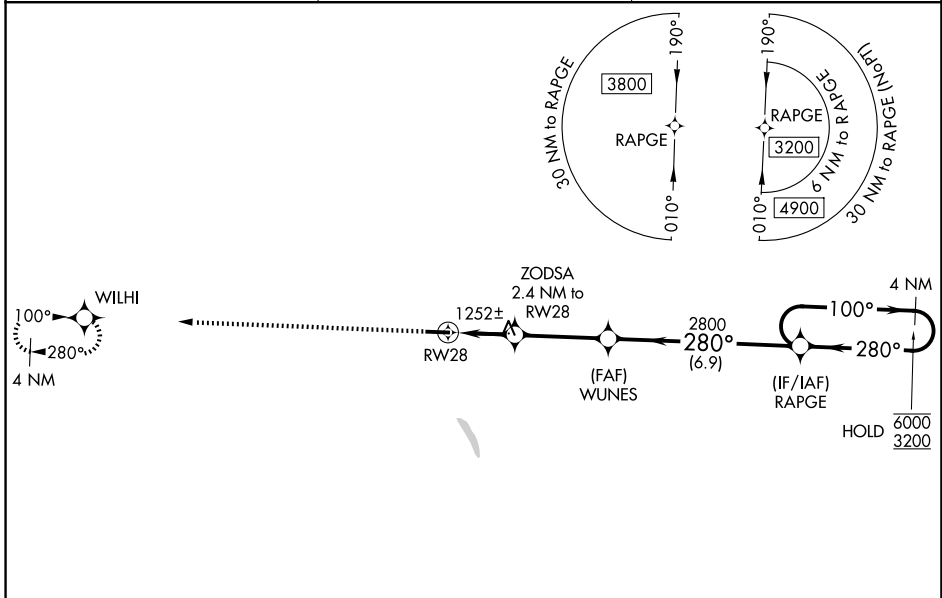
**▼** Rwy 28 helicopter visibility reduction below 1 SM NA. Rwy 28 Straight-in and Circling minimums NA at night. When local altimeter setting not received, use Charleston altimeter setting and increase all MDA's 80 feet, LP and LNAV Cats C and D visibility 1/8 SM and Circling Cats C and D visibility 1/4 SM. \*1780 when using Charleston altimeter setting.

**MISSED APPROACH:**  
Climb to 3500 direct WILHI and hold.

AWOS-3  
**118.575**

CHARLESTON APP CON  
**124.1 269.125**

UNICOM  
**122.725 (CTAF) ①**



NE-4, 16 APR 2026 to 14 MAY 2026

NE-4, 16 APR 2026 to 14 MAY 2026

|                 |                 |
|-----------------|-----------------|
| ELEV <b>928</b> | TDZE <b>928</b> |
|-----------------|-----------------|

| CATEGORY | A                     | B                       | C                       | D                       |
|----------|-----------------------|-------------------------|-------------------------|-------------------------|
| LP MDA   | 1520-1                | 592 (600-1)             | 1520-1¾                 | 592 (600-1¾)            |
| LNAV MDA | 1520-1                | 592 (600-1)             | 1520-1¾                 | 592 (600-1¾)            |
| CIRCLING | 1560-1<br>632 (700-1) | 1760-1¼<br>832 (900-1¼) | 1760-2½<br>832 (900-2½) | 1760-2¾<br>832 (900-2¾) |