

WAAS CH <b>61324</b> <b>W23A</b>	APP CRS <b>226°</b>	Rwy Ldg TDZE Apt Elev	<b>5002</b> <b>411</b> <b>411</b>
--	------------------------	-----------------------------	---

# RNAV (GPS) RWY 23

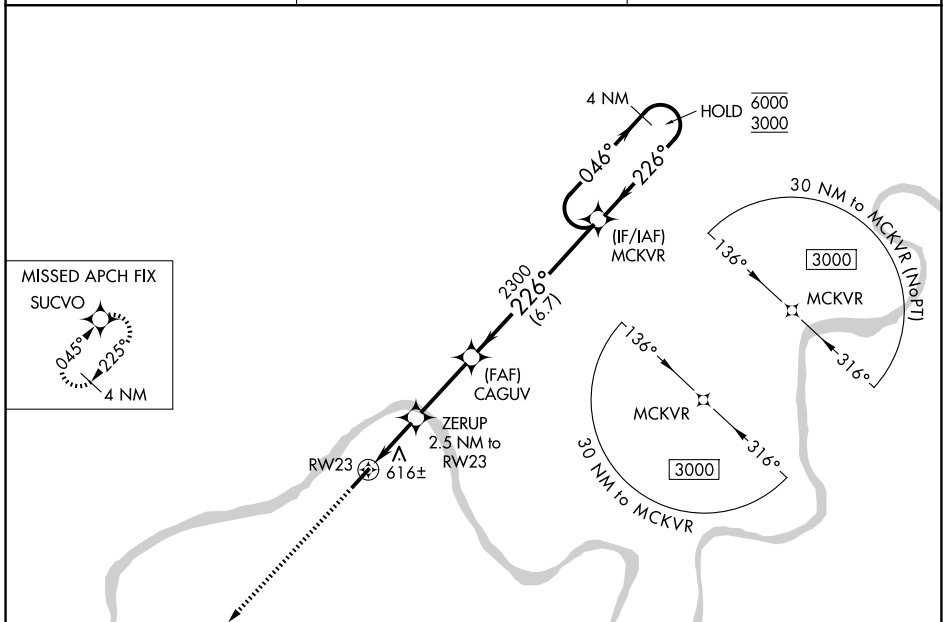
HANCOCK COUNTY/RON LEWIS FLD (KY8)

RNP APCH - GPS.

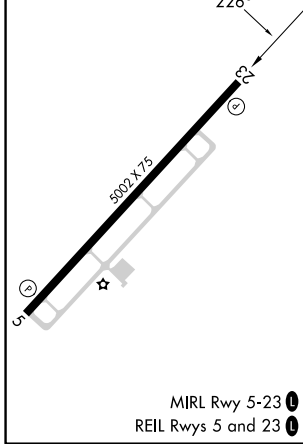
**⚠** Rwy 23 helicopter visibility reduction below 3/4 SM NA. For uncompensated Baro-VNAV systems, LNAV/VNAV NA below -15°C or above 54°C.

**⚠** MISSED APPROACH: Climb to 3000 direct SUCVO and hold.

AWOS-3 <b>119.775</b>	EVANSVILLE APP CON ★ <b>124.025 290.9</b>	UNICOM <b>123.0 (CTAF) 0</b>
--------------------------	--	---------------------------------



ELEV 411	TDZE 411
----------	----------



3000 SUCVO	VGSi and RNAV glidepath not coincident (VGSi Angle 3.00/TCH 45).		4 NM Holding Pattern
	ZERUP 2.5 NM to RW23	CAGUV 2300	MCKVR
	1.3 NM to RW18	1260	2300
	1.3 NM	1.2 NM	2.9 NM
			6.7 NM
			GP 3.15° TCH 58

CATEGORY	A	B	C	D
LPV DA	834-1 1/4	423 (500-1 1/4)		NA
LNAV/VNAV DA	880-1 3/8	469 (500-1 3/8)		NA
LNAV MDA	880-1	469 (500-1)	880-1 3/8 469 (500-1 3/8)	NA
CIRCLING	960-1 549 (600-1)	1080-1 669 (700-1)	1160-2 1/4 749 (800-2 1/4)	NA

SE-1, 16 APR 2026 to 14 MAY 2026

SE-1, 16 APR 2026 to 14 MAY 2026