

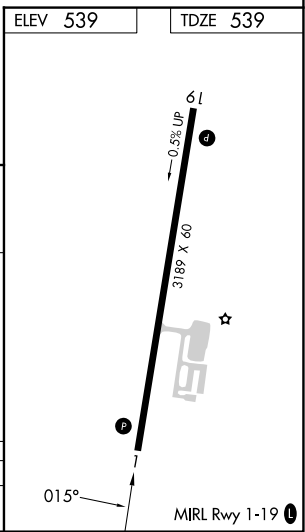
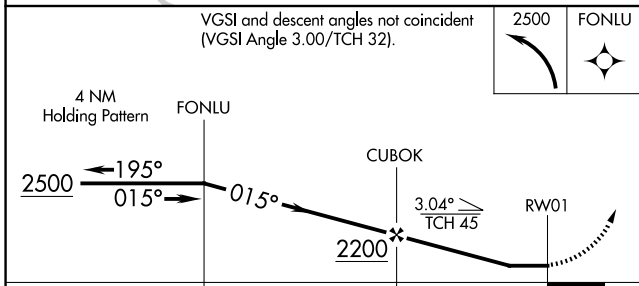
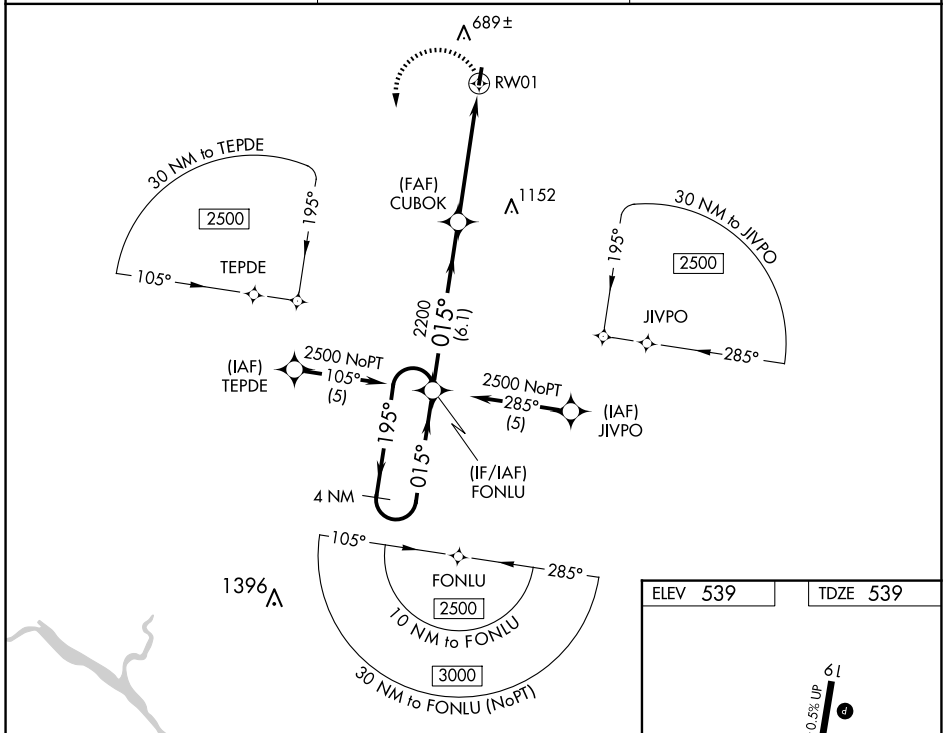
APP CRS	Rwy Ldg	<b>3189</b>
<b>015°</b>	TDZE	<b>539</b>
	Apt Elev	<b>539</b>

# RNAV (GPS) RWY 1

SALUDA COUNTY (6J4)

RNP APCH.		<p><b>MISSED APPROACH:</b> Climbing left turn to 2500 direct FONLU and hold.</p>
<p><b>▼</b> Procedure NA at night. Rwy 1 helicopter visibility reduction below 1 SM NA. <b>▲</b> NA Use Aiken altimeter setting; when not received, use Augusta Rgnl at Bush Fld altimeter setting and increase all MDA 100 feet and increase LNAV Cat C visibility ¼ SM.</p>		

AIK AWOS-3PT <b>118.025</b>	AUGUSTA APP CON ★ <b>119.15</b>	CTAF <b>122.9</b>
--------------------------------	------------------------------------	----------------------



CATEGORY	A	B	C	D
LNAV MDA	1160-1	621 (700-1)	1160-1¼ 621 (700-1¼)	NA

SE-2, 16 APR 2026 to 14 MAY 2026

SE-2, 16 APR 2026 to 14 MAY 2026