

APP CRS	Rwy Ldg	<b>3189</b>
<b>195°</b>	TDZE	<b>539</b>
	Apt Elev	<b>539</b>

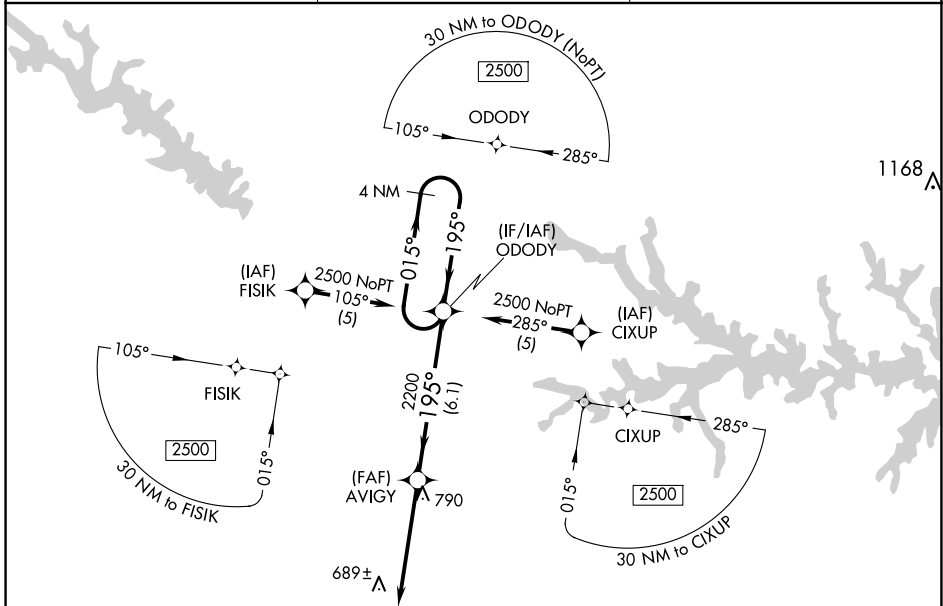
# RNAV (GPS) RWY 19

SALUDA COUNTY (6J4)

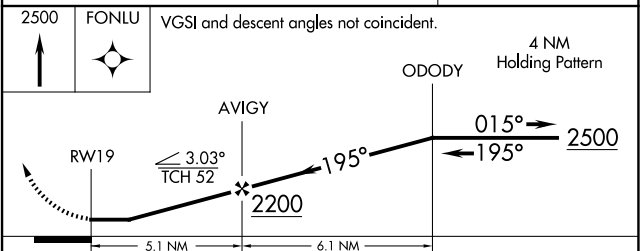
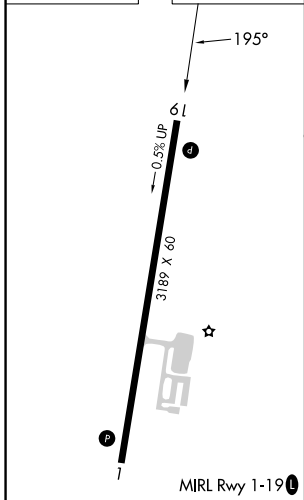
**NA** DME/DME RNP-0.3 NA. Procedure NA at night. Visibility reduction by helicopters NA. Use Aiken altimeter setting, when not received, use Augusta Rgnl altimeter setting and increase all MDA's 100 feet, increase LNAV Cat C visibility ¼ SM and Circling Cat C visibility ½ SM.

MISSED APPROACH: Climb to 2500 direct FONLU and hold.

AIK AWOS-3PT <b>118.025</b>	AUGUSTA APP CON ★ <b>119.15</b>	CTAF <b>122.9</b>
--------------------------------	------------------------------------	----------------------



ELEV 539	TDZE 539
----------	----------



CATEGORY	A	B	C	D
LNAV MDA	1060-1	521 (600-1)	1060-1½ 521 (600-1½)	NA
CIRCLING	1100-1 561 (600-1)	1160-1 621 (700-1)	1180-1¾ 641 (700-1¾)	NA

SE-2, 16 APR 2026 to 14 MAY 2026

SE-2, 16 APR 2026 to 14 MAY 2026