

WAAS CH 70447 W29A	APP CRS 286°	Rwy Idg TDZE 7252 Apt Elev 7299
--	------------------------	---

RNAV (GPS) RWY 29

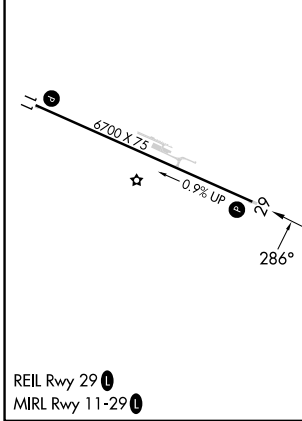
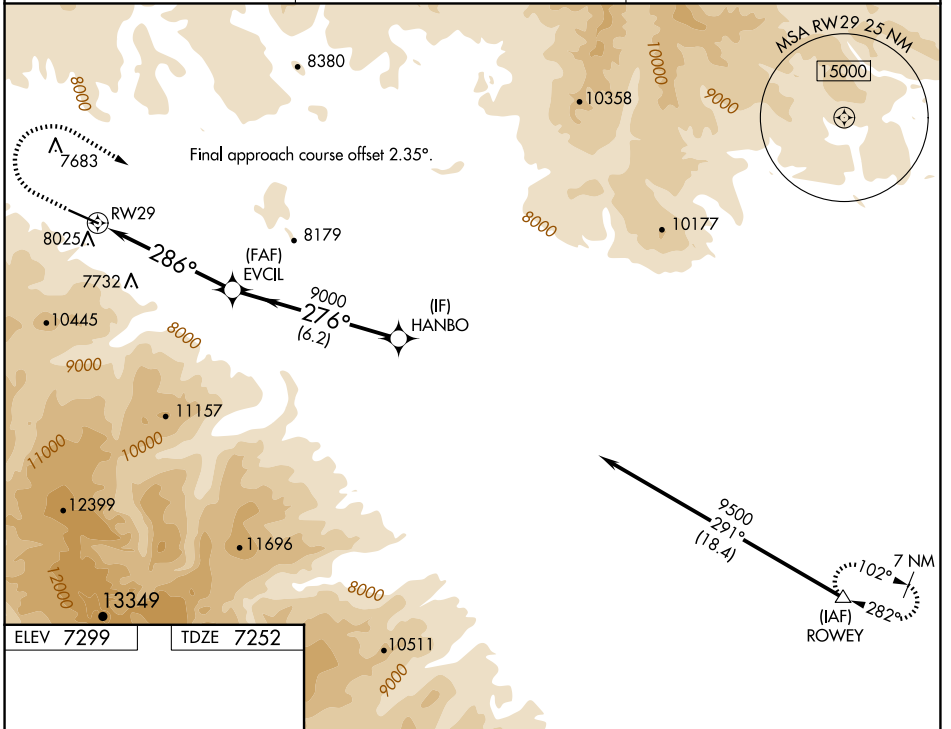
DUBOIS MUNI (DUB)

RNP APCH - GPS.

⚠ When local altimeter setting not received, procedure NA.
 ⚠ Rwy 29 helicopter visibility reduction below 3/4 SM NA.
 Procedure NA at night. Circling NA south of Rwy 11-29.

MISSED APPROACH: Climb to 8300 then climbing right turn to 11500 direct ROWEY and hold.
 *Missed approach requires minimum climb of 300 feet per NM to 9100.

AWOS-3PT 118.275	SALT LAKE CENTER 133.25 285.6	CTAF 122.9
----------------------------	---	----------------------



8300	11500	ROWEY	HANBO	
↑	↷	△		
RW29		EVCIL	HANBO	
4.4 NM to RW29		9000	9500	
286°		276°	GP 3.00°	
9000		TCH 43		
4.4 NM		1 NM	6.2 NM	
CATEGORY	A	B	C	D
LPV DA*	8020-2½ 768 (800-2½)			NA
LNAV MDA	8700-1¼ 1448 (1500-1½)	8700-1½ 1448 (1500-1½)	8700-3 1448 (1500-3)	NA
CIRCLING	8700-1¼ 1401 (1500-1½)	8700-1½ 1401 (1500-1½)	8800-3 1501 (1600-3)	NA

NW-1, 16 APR 2026 to 14 MAY 2026

NW-1, 16 APR 2026 to 14 MAY 2026