

|  |                        |   |
|--|------------------------|---|
| WAAS<br>CH <b>70739</b><br><b>W14A</b> | APP CRS<br><b>146°</b> | Rwy Ldg<br>TDZE <b>1232</b><br>Apt Elev <b>1240</b> |
|--|------------------------|---|

# RNAV (GPS) RWY 14

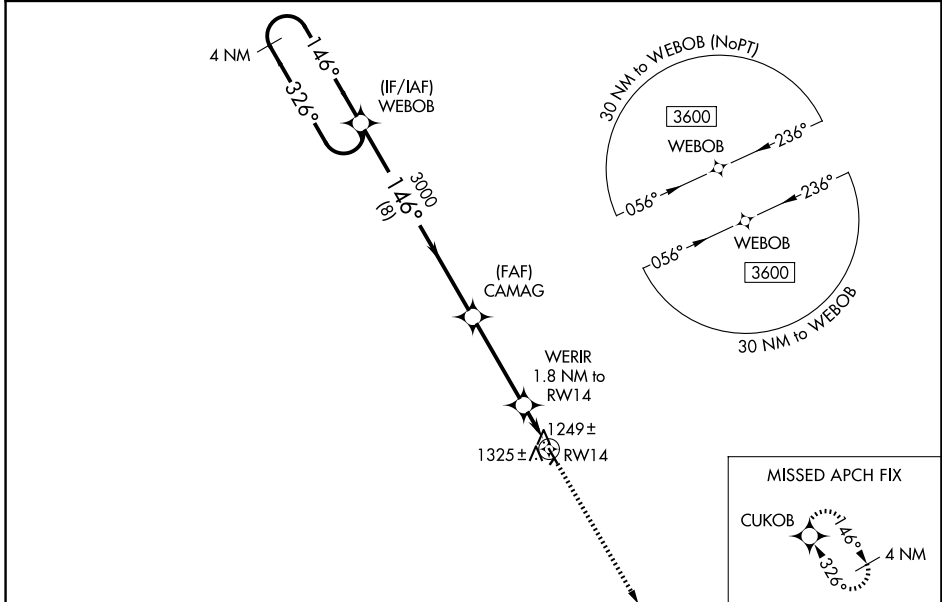
ISBON MUNI (6L3)

RNP APCH - GPS.

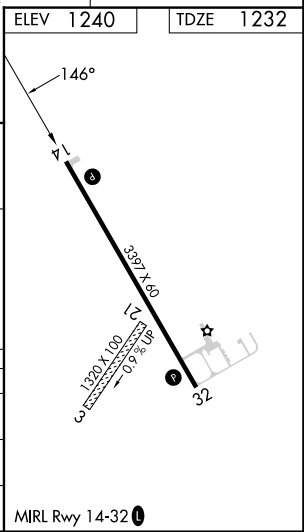
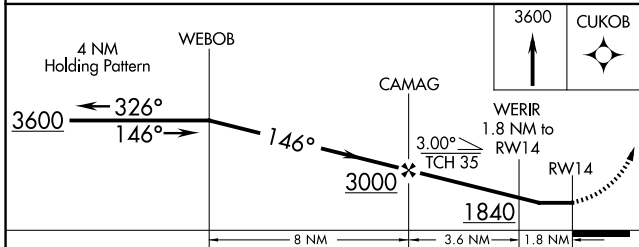
⚠ NA Circling NA to Rwy 3 and 21. Rwy 14 helicopter visibility reduction below 1 SM NA. Use Gwinner altimeter setting; when not received, use Valley City altimeter setting and increase all MDAs 80 feet. Straight-In Rwy 14 NA at night. Circling Rwy 14 NA at night.

MISSED APPROACH: Climb to 3600 direct CUKOB and hold.

|                              |   |                      |
|------------------------------|---|----------------------|
| GWR AWOS-3<br><b>118.325</b> | MINNEAPOLIS CENTER<br><b>127.35 278.3</b> | CTAF<br><b>122.9</b> |
|------------------------------|---|----------------------|



|           |           |
|-----------|-----------|
| ELEV 1240 | TDZE 1232 |
|-----------|-----------|



| CATEGORY | A                     | B                     | C | D  |
|----------|-----------------------|-----------------------|---|----|
| LP MDA   | 1580-1                | 348 (400-1)           |   | NA |
| LNAV MDA | 1620-1                | 388 (400-1)           |   | NA |
| CIRCLING | 1740-1<br>500 (500-1) | 1940-1<br>700 (700-1) |   | NA |

NC-1, 16 APR 2026 to 14 MAY 2026

NC-1, 16 APR 2026 to 14 MAY 2026

MIRL Rwy 14-32