

WAAS CH <b>82734</b> <b>W33A</b>	APP CRS <b>327°</b>	Rwy Ldg TDZE <b>1348</b> Apt Elev <b>1348</b>
--	------------------------	---

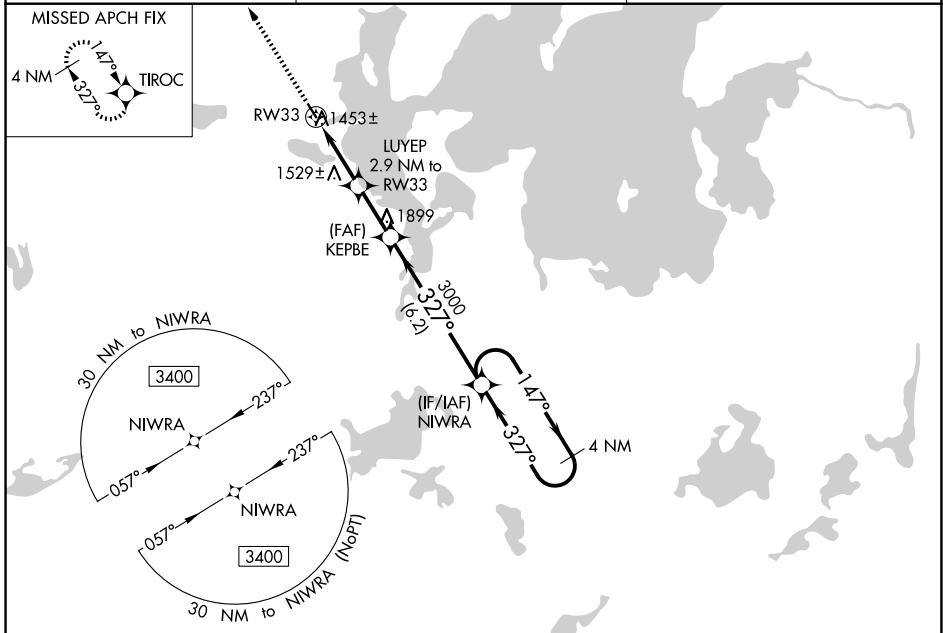
# RNAV (GPS) RWY 33

WALKER MUNI (Y49)

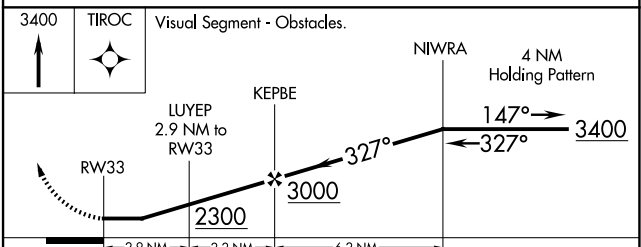
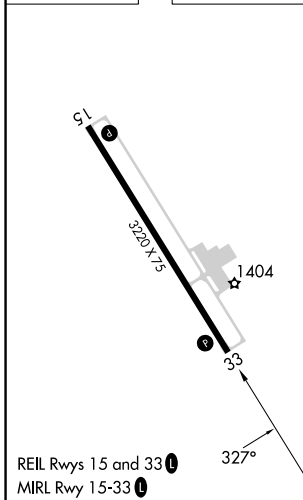
**⚠** DME/DME RNP-0.3 NA. When local altimeter setting not received, use Longville altimeter setting and increase all MDA 60 feet; increase LP and Circling Cat C visibility ¼ SM; increase LNAV Cat C visibility ⅓ SM. Procedure NA at night. Rwy 33 helicopter visibility reduction below 1 SM NA.

**⚠** MISSED APPROACH: Climb to 3400 direct TIROC and hold.

AWOS-3PT <b>119.0</b>	MINNEAPOLIS CENTER <b>134.75 251.1</b>	CTAF <b>122.90</b>
--------------------------	---	-----------------------



ELEV 1348	TDZE 1348
-----------	-----------



CATEGORY	A	B	C	D
LP MDA	1720-1		372 (400-1)	NA
LNAV MDA	1780-1	432 (500-1)	1780-1¼ 432 (500-1¼)	NA
CIRCLING	1860-1	512 (600-1)	2140-2¼ 792 (800-2¼)	NA

NC-1, 16 APR 2026 to 14 MAY 2026

NC-1, 16 APR 2026 to 14 MAY 2026