

COUSHATTA, LOUISIANA

AL-10410 (FAA)

26022

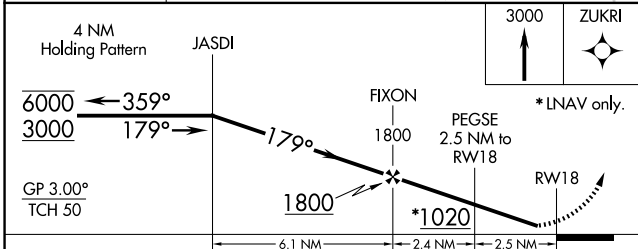
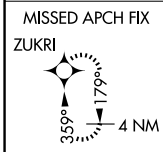
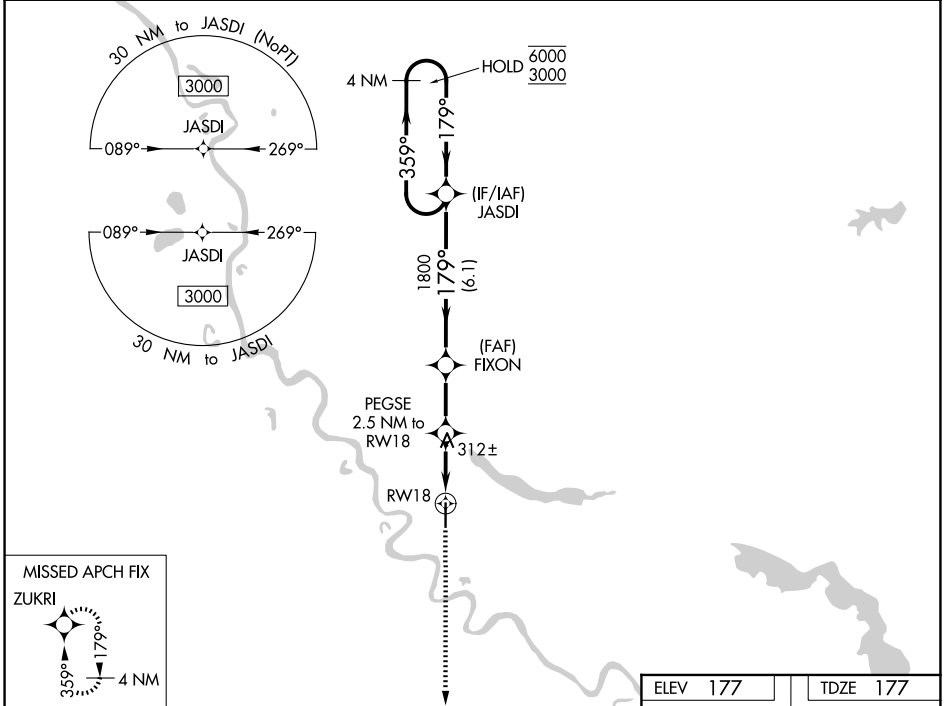
WAAS CH 93842 W18A	APP CRS 179°	Rwy Ldg TDZE 177 Apt Elev 177	5002
--	------------------------	---	-------------

RNAV (GPS) RWY 18

THE RED RIVER (ØR7)

RNP APCH. **▽** Rwy 18 helicopter visibility reduction below ¼ SM NA. Baro-VNAV NA. **△** NA Use Natchitoches altimeter setting. Procedure NA at night. MISSED APPROACH: Climb to 3000 direct ZUKRI and hold, continue climb in hold to 3000.

IER AWOS-3 119.025	POLK APP CON 132.05 254.8	CTAF 122.9 0
------------------------------	-------------------------------------	------------------------



ELEV 177	TDZE 177
81	179°
74 X 2000	
36	
MIRL Rwy 18-36 REIL Rwy 18 and 36	

CATEGORY	A	B	C	D
LPV DA	478-1 301 (400-1)			
RNAV/VNAV DA	632-1 3/8 455 (500-1 3/8)			
RNAV MDA	620-1	443 (500-1)	620-1 3/8	443 (500-1 3/8)
CIRCLING	660-1	483 (500-1)	920-2 1/4 743 (800-2 1/4)	940-2 1/2 763 (800-2 1/2)

COUSHATTA, LOUISIANA
Orig-A 17APR25

31°59'N-93°18'W

RNAV (GPS) RWY 18

THE RED RIVER (ØR7)

SC-4, 16 APR 2026 to 14 MAY 2026

SC-4, 16 APR 2026 to 14 MAY 2026