

WAAS CH 56638 W34A	APP CRS 344°	Rwy Ldg TDZE 1162 Apt Elev 1162	3400
--	------------------------	---	-------------

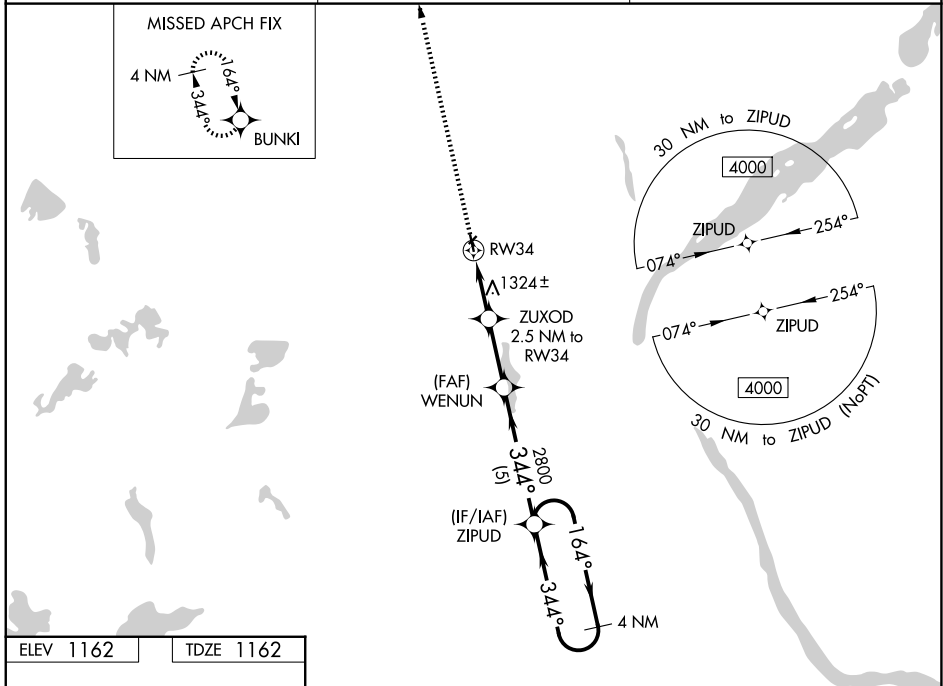
RNAV (GPS) RWY 34

SISSETON MUNI (8D3)

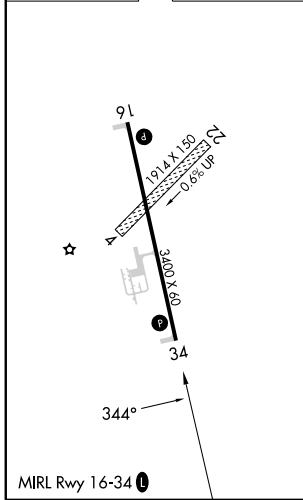
⚠ NA Circling NA to Rwy 4 and 22. Baro-VNAV NA. DME/DME RNP-0.3 NA.
 Use Wheaton altimeter setting, when not received, use Ortonville altimeter setting and increase LPV DA to 1496 feet, LNAV/VNAV DA to 1673 feet and all MDA 20 feet.
 Increase LPV Cats A/B visibility 1/8 mile.

MISSED APPROACH: Climb to 4000 direct BUNKI and hold, continue climb in hold to 4000.

ETH AWOS-3 118.775	MINNEAPOLIS CENTER 128.5 306.2	CTAF 122.9
------------------------------	--	----------------------



ELEV 1162	TDZE 1162
-----------	-----------



4000 BUNKI VGS1 and RNAV glidepath not coincident (VGS1 Angle 3.00/TCH 28). 4 NM Holding Pattern

*LNAV only

ZIPUD 4000

164°

344°

2800

2800

344°

*2000

2.5 NM

2.5 NM

5 NM

ZIPUD

WENUN

ZUXOD

2.5 NM to RW34

RW34

GP 3.00° TCH 40

CATEGORY	A	B	C	D
LPV DA	1478-1	316 (400-1)		NA
LNAV/VNAV DA	1655-1¾	493 (500-1¾)		NA
LNAV MDA	1640-1	478 (500-1)		NA
CIRCLING	1660-1 498 (500-1)	1700-1 538 (600-1)		NA

NC-1, 16 APR 2026 to 14 MAY 2026

NC-1, 16 APR 2026 to 14 MAY 2026