

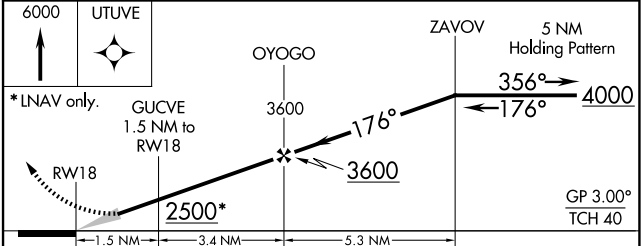
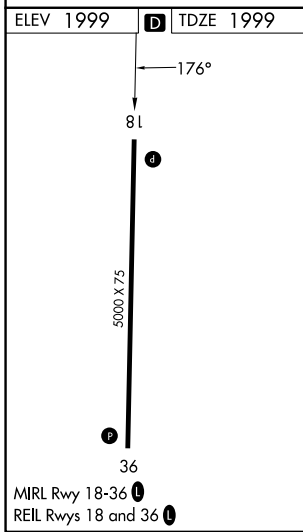
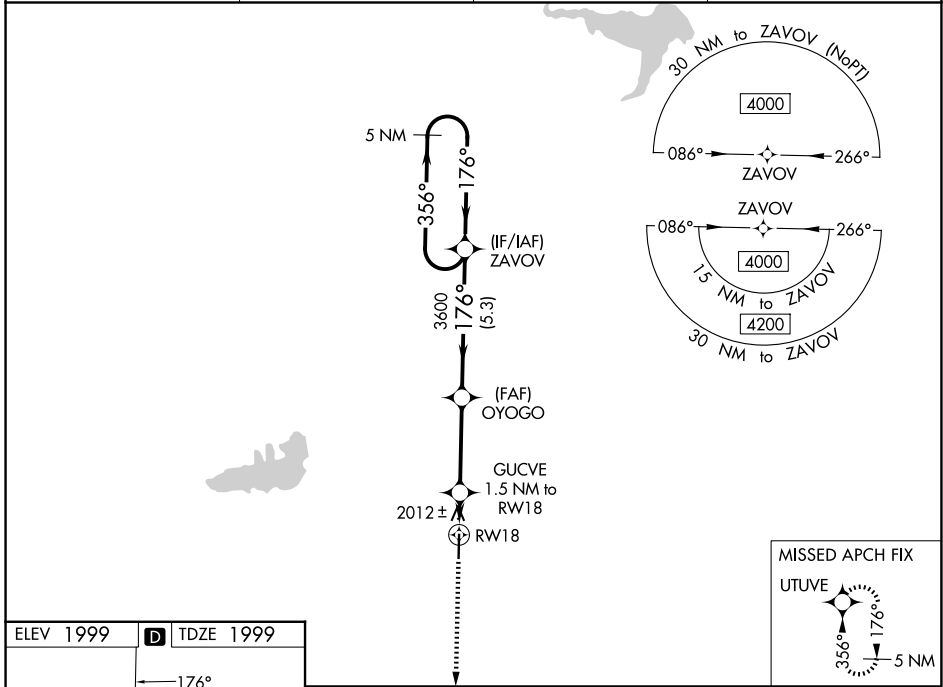
WAAS CH <b>82432</b> <b>W18A</b>	APP CRS <b>176°</b>	Rwy Ldg TDZE Apt Elev	<b>5000</b> <b>1999</b> <b>1999</b>
--	------------------------	-----------------------------	---

# RNAV (GPS) RWY 18

ROOKS COUNTY RGNL (RCP)

<p><b>▽</b> <b>▲</b> NA Baro-VNAV NA. Use Hill City altimeter setting; when not received, use Hays altimeter setting. Circling NA west of Rwy 18-36. DME/DME RNP-0.3 NA.</p>	<p>MISSED APPROACH: Climb to 6000 direct UTUVE and hold, continue climb-in-hold to 6000.</p>
--	--

AWOS-3PT <b>120.075</b>	HLC ASOS <b>118.425</b>	DENVER CENTER <b>132.7 226.675</b>	CTAF <b>122.9</b> <b>📍</b>
----------------------------	----------------------------	---------------------------------------	-------------------------------



CATEGORY	A	B	C	D
LPV DA	2290-1 291 (300-1)			NA
LNAV/VNAV DA	2340-1 <sup>1</sup> / <sub>8</sub> 341 (400-1 <sup>1</sup> / <sub>8</sub> )			NA
LNAV MDA	2360-1 361 (400-1)			NA
CIRCLING	2460-1 461 (500-1)	2480-1 481 (500-1)	2500-1 <sup>1</sup> / <sub>2</sub> 501 (600-1 <sup>1</sup> / <sub>2</sub> )	NA

NC-2, 16 APR 2026 to 14 MAY 2026

NC-2, 16 APR 2026 to 14 MAY 2026