

WAAS CH 69531 W27A	APP CRS 276°	Rwy Ldg TDZE Apt Elev	4403 2036 2037
--	------------------------	-----------------------------	---

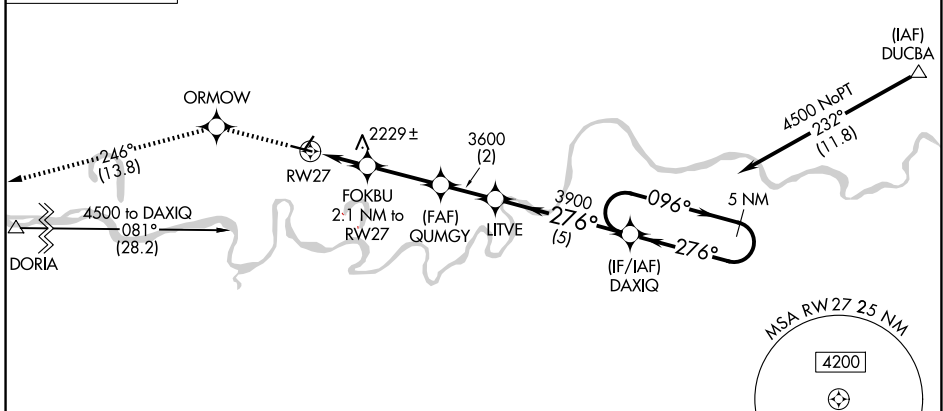
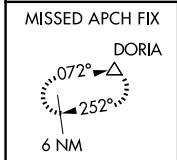
RNAV (GPS) RWY 27

POPLAR MUNI (PO1)

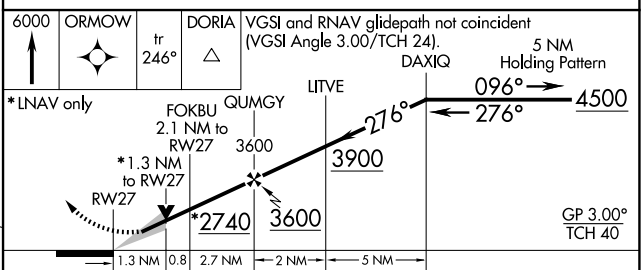
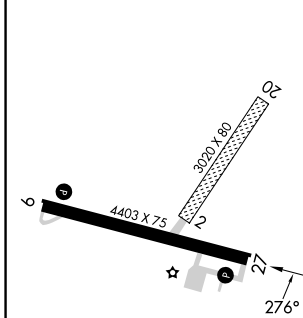
⚠ NA For uncompensated Baro-VNAV systems, LNAV/VNAV NA below -19°C (-2°F) or above 54°C (130°F). DME/DME RNP -0.3 NA. When local altimeter setting not received, use Wolf Point altimeter setting: increase LPV DA to 2332, LNAV/VNAV DA to 2582 and all Cats visibility ¼ SM; increase all MDAs 60 feet and Circling Cat C/D visibility ¼ SM. Baro-VNAV and VDP NA with Wolf Point altimeter setting. Helicopter visibility reduction below 1 SM not authorized. Circling NA to Rwy 2/20.

MISSED APPROACH: Climb to 6000 direct ORMOW and on track 246° to DORIA and hold, continue climb-in-hold to 6000.

AWOS-3PT 135.325	SALT LAKE CITY CENTER 126.85 305.2	UNICOM 122.8 (CTAF) ①
----------------------------	--	---------------------------------



ELEV 2037	TDZE 2036
-----------	-----------



CATEGORY	A	B	C	D
LPV DA	2286-1 250 (300-1)			
LNAV/VNAV DA	2536-1¾ 500 (500-1¾)			
LNAV MDA	2480-1	444 (500-1)	2480-1⅜	444 (500-1⅜)
CIRCLING	2560-1 523 (600-1)	2600-1 563 (600-1)	2600-1½ 563 (600-1½)	2740-2¼ 703 (800-2¼)

NW-1, 16 APR 2026 to 14 MAY 2026

NW-1, 16 APR 2026 to 14 MAY 2026