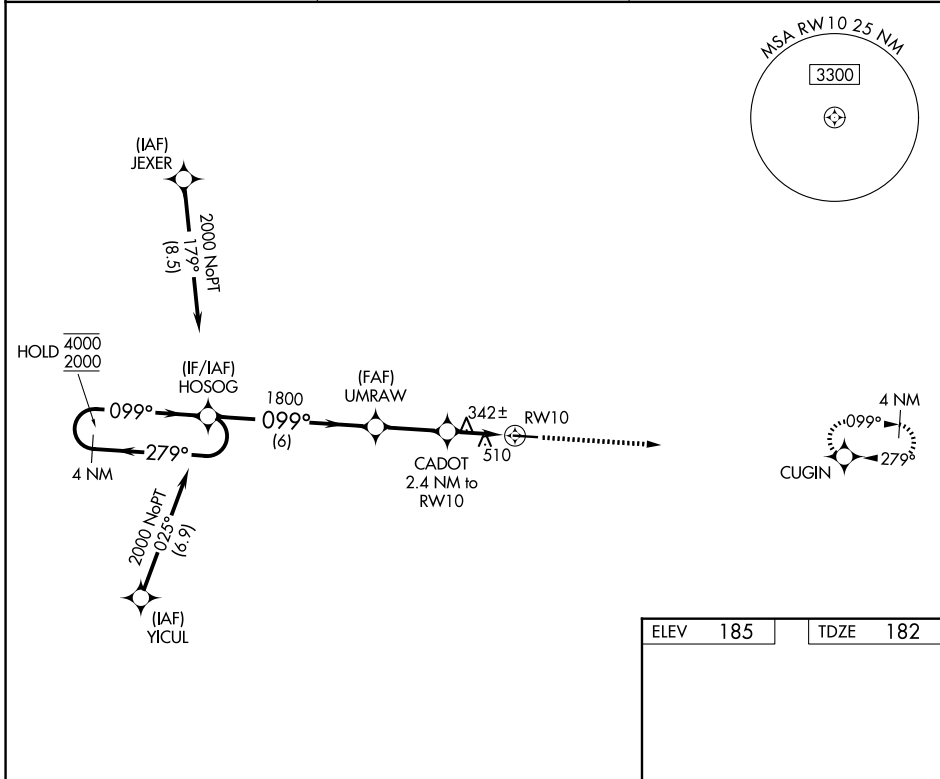


WAAS CH 42734 W10A	APP CRS 099°	Rwy Ldg TDZE 182 Apt Elev 185
--	------------------------	---

RNAV (GPS) RWY 10

QUITMAN BROOKS COUNTY (4J5)

RNP APCH - GPS.		MISSED APPROACH: Climb to 2000 direct CUGIN and hold.
<p>▼ Rwy 10 helicopter visibility reduction below 1 SM NA. Procedure NA at night. Use VLD altimeter setting; when not received, use TVI altimeter setting and increase all MDAs 20 feet and LNAV Cat C visibility 1/8 SM.</p> <p>▲NA</p>		
VLD ASOS 126.225	VALDOSTA APP CON★ 126.6	CTAF 122.9 0



SE-4, 16 APR 2026 to 14 MAY 2026

SE-4, 16 APR 2026 to 14 MAY 2026

ELEV 185	TDZE 182
----------	----------

Visual Segment - Obstacles.

4 NM Holding Pattern

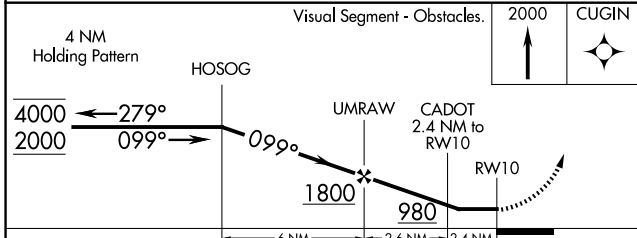
HOSOG (4000/2000) → UMRW (1800) → CADOT (980) → RWY 10

Distances: 6 NM (HOSOG to UMRW), 2.6 NM (UMRW to CADOT), 2.4 NM (CADOT to RWY 10)

Obstacles: 2000, CUGIN

Final approach: 0.3% UP, 5000 X 76, 28'

MIRL Rwy 10-28 0



CATEGORY	A	B	C	D
LP MDA	640-1	458 (500-1)	640-1 ³ / ₈ 458 (500-1 ³ / ₈)	NA
LNAV MDA	820-1	638 (700-1)	820-1 ³ / ₄ 638 (700-1 ³ / ₄)	NA