

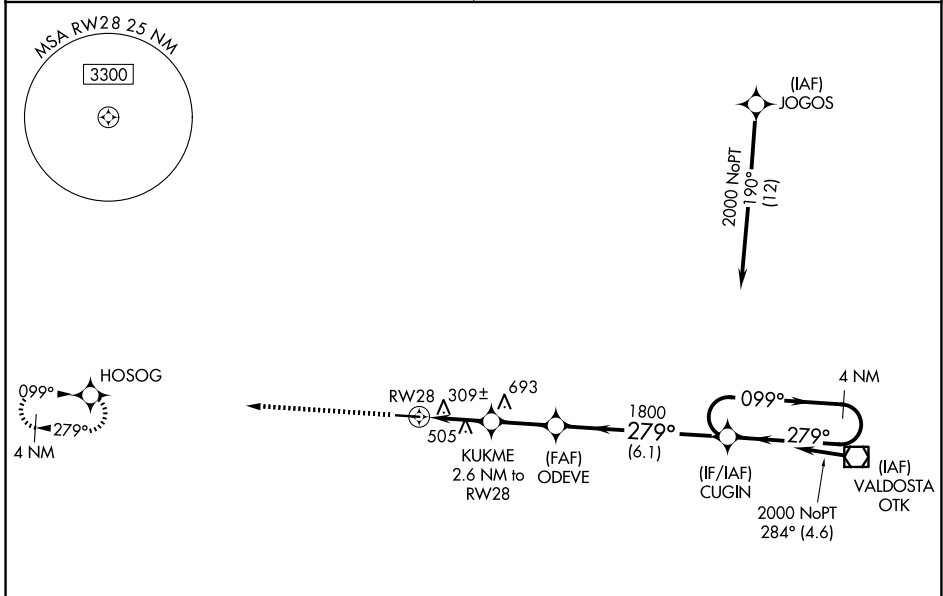
WAAS CH 99534 W28A	APP CRS 279°	Rwy Ldg TDZE Apt Elev	5000 185 185
--	------------------------	-----------------------------	---

RNAV (GPS) RWY 28

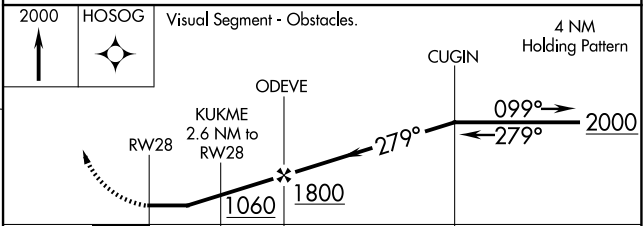
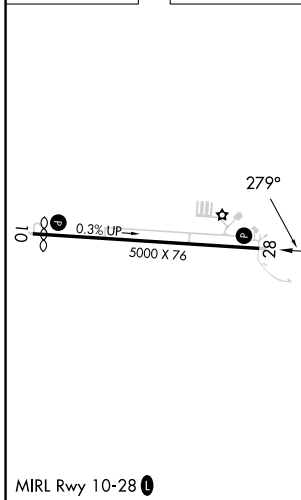
QUITMAN BROOKS COUNTY (4J5)

RNP APCH.	MISSED APPROACH: Climb to 2000 direct HOSOG and hold.
<p>Procedure NA at night. Rwy 28 helicopter visibility reduction below 1 SM NA. Use Valdosta altimeter setting; when not received, use Thomasville altimeter setting and increase all MDA 20 feet; increase LP and LNAV Cat C visibility 1/8 SM.</p>	

VALDOSTA APP CON ★ 126.6	CTAF 122.9
------------------------------------	----------------------



ELEV 185	TDZE 185
----------	----------



CATEGORY	A	B	C	D
LP MDA	600-1	415 (500-1)	600-1 1/8 415 (500-1 1/8)	NA
LNAV MDA	860-1	675 (700-1)	860-1 1/8 675 (700-1 1/8)	NA

SE-4, 16 APR 2026 to 14 MAY 2026

SE-4, 16 APR 2026 to 14 MAY 2026