

WAAS CH 86426 W21A	APP CRS 214°	Rwy Ldg 5002 TDZE 1348 Apt Elev 1348
--	------------------------	--

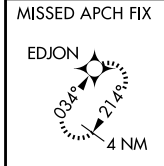
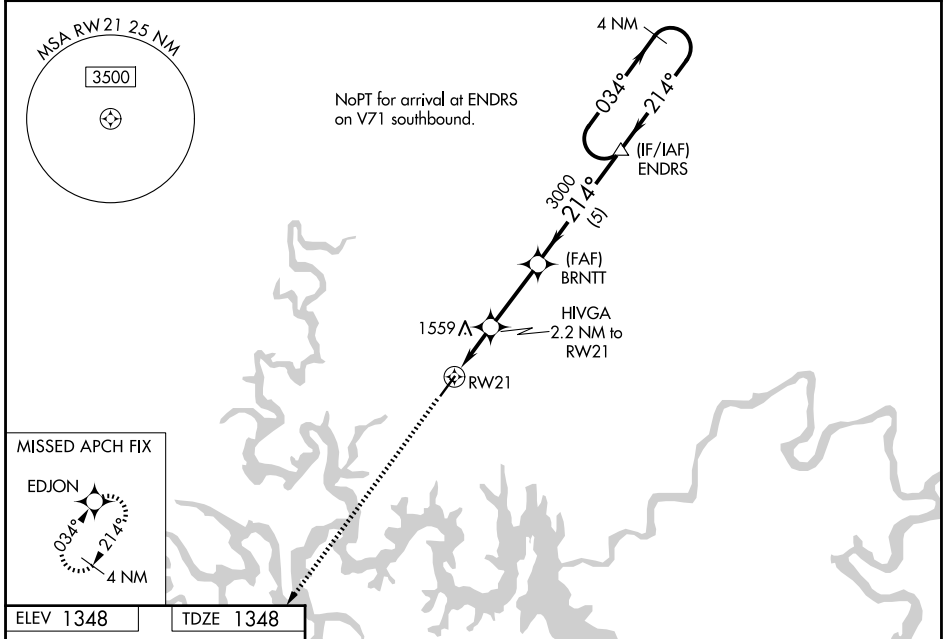
RNAV (GPS) RWY 21

BRANSON WEST MUNI/EMERSON FLD (F/WB)

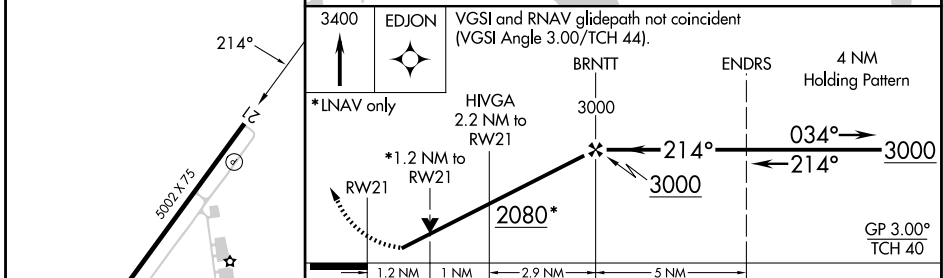
⚠ DME/DME RNP-0.3 NA. Helicopter visibility reduction below $\frac{3}{4}$ SM NA. When local altimeter setting not received, use Branson altimeter setting; increase all DA 39 feet and all MDA 40 feet; increase LPV Cat A/B visibility to 1 mile and LNAV/VNAV Cat A/B visibility to $1\frac{1}{4}$. For uncompensated Baro-VNAV systems, LNAV/VNAV NA below -17°C (2°F) or above 54°C (130°F). VDP and Baro-VNAV NA when using Branson altimeter setting.

⚠ NA MISSED APPROACH: Climb to 3400 direct EDJON and hold.

AWOS-3PT 119.725	SPRINGFIELD APP CON 126.35	UNICOM 123.0 (CTAF) 0
----------------------------	--------------------------------------	---------------------------------



ELEV 1348	TDZE 1348
-----------	-----------



CATEGORY	A	B	C	D
LPV DA	1598-1	250 (300-1)		NA
LNAV/VNAV DA	1832-1 $\frac{5}{8}$	485 (500-1 $\frac{5}{8}$)		NA
LNAV MDA	1800-1	452 (500-1)		NA
CIRCLING	1900-1	552 (600-1)		NA

MIRL Rwy 3-21 0
REIL Rwy 3 and 21 0

NC-3, 16 APR 2026 to 14 MAY 2026

NC-3, 16 APR 2026 to 14 MAY 2026