

WAAS CH 77619 W18A	APP CRS 183°	Rwy Idg TDZE Apt Elev	4600 3326 3326
--	------------------------	-----------------------------	---

RNAV (GPS) RWY 18

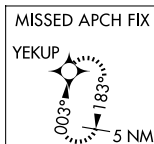
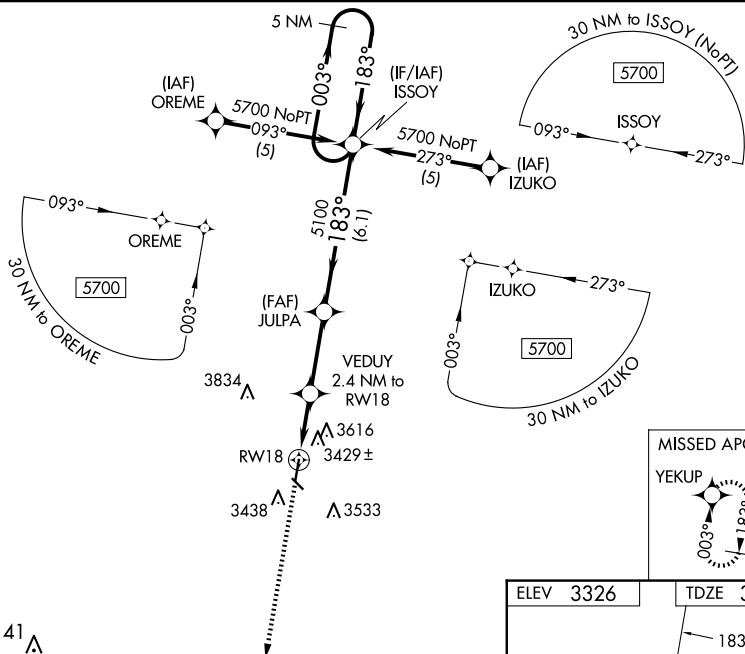
SYRACUSE-HAMILTON COUNTY MUNI (3K3)

RNP APCH-GPS.

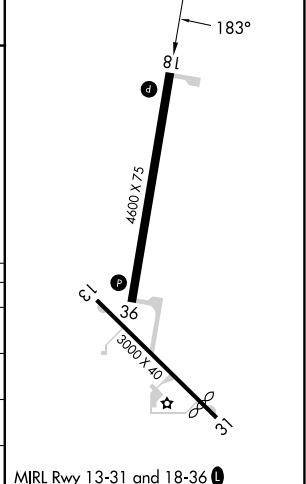
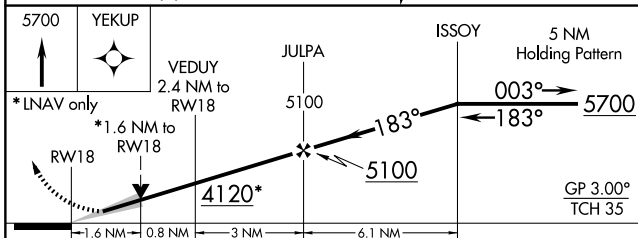
⚠ Baro-VNAV NA when using Lamar altimeter setting. For uncompensated Baro-VNAV systems, LNAV/VNAV NA below -21°C (-5°F) or above 54°C (130°F). When local altimeter setting not received, use Lamar altimeter setting; increase LPV DA to 3730 feet and all visibilities ½ SM; increase LNAV/VNAV DA to 4093 feet and all visibilities ¾ SM; increase all MDAs 160 feet and visibility Circling Cat A/B ¼ SM and LNAV Cat C and Circling Cat C ½ SM. VDP NA when using Lamar altimeter setting. Circling to Rwy 13/31 NA at night.

MISSED APPROACH:
Climb to 5700 direct YEKUP and hold.

AWOS-3PT 119.975	DENVER CENTER 133.4 377.175	UNICOM 122.8 (CTAF)
----------------------------	---------------------------------------	-------------------------------



ELEV 3326	TDZE 3326
-----------	-----------



CATEGORY	A	B	C	D
LPV DA	3576-1 250 (300-1)			NA
LNAV/VNAV DA	3939-2¼ 613 (700-2¼)			NA
LNAV MDA	3860-1 534 (600-1)	3860-1½ 534 (600-1½)		NA
CIRCLING	3980-1 654 (700-1)	4200-2½ 874 (900-2½)		NA

NC-2, 16 APR 2026 to 14 MAY 2026

NC-2, 16 APR 2026 to 14 MAY 2026