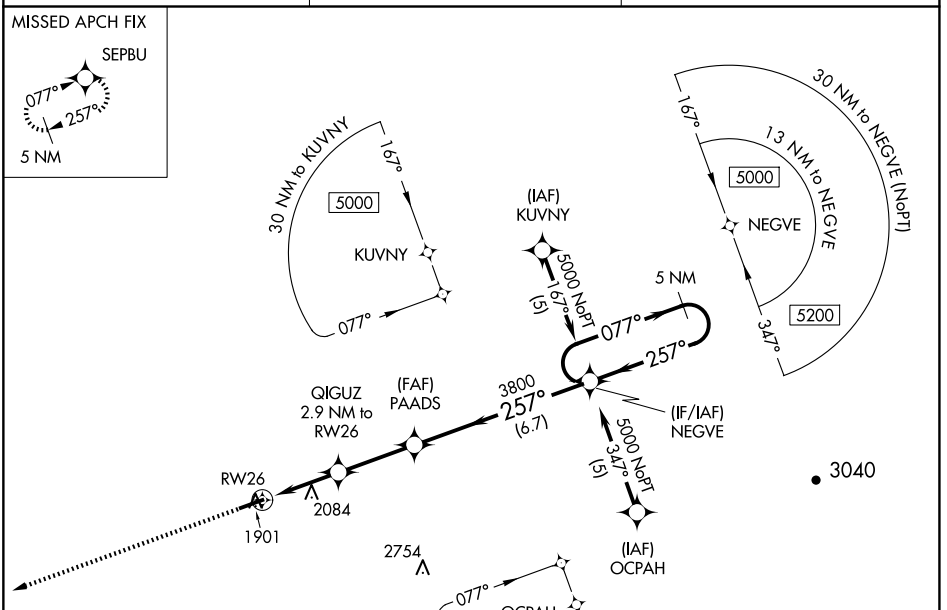


APP CRS 257°	Rwy Idg 5001
	TDZE 1883
	Apt Elev 1883

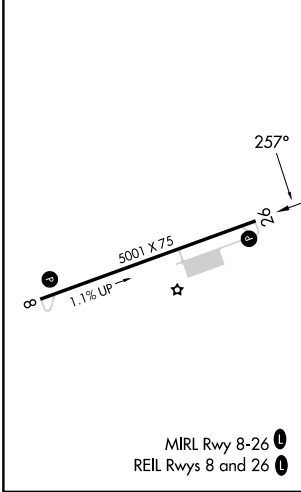
RNAV (GPS) RWY 26

SOUTHERN WEST VIRGINIA RGNL (E,B,D)

RNP APCH - GPS.		MISSED APPROACH: Climb to 5000 direct SEPBU and hold.
Obtain local altimeter setting on CTAF; when not received, use Beckley altimeter setting: increase all MDAs 140 feet and visibility LNAV Cat A and Circling Cat A/B ¼ SM and Circling Cat C ½ SM.		
116 AWOS-3 120.625	INDIANAPOLIS CENTER 126.575 257.85	UNICOM 122.8 (CTAF) 0



ELEV 1883	TDZE 1883
------------------	------------------



	5000	SEPBU	NEGVE	5 NM Holding Pattern
		QIGUZ 2.9 NM to RWY 26	PAADS	
		2.9 NM	2.9 NM	6.7 NM
CATEGORY	A	B	C	D
LNAV MDA	2660-1 777 (800-1)	2660-1¼ 777 (800-1¼)	2660-2½ 877 (900-2½)	777 (800-2½) 2900-3 1017 (1100-3)
CIRCLING	2680-1	797 (800-1)		

NE-4, 16 APR 2026 to 14 MAY 2026

NE-4, 16 APR 2026 to 14 MAY 2026