

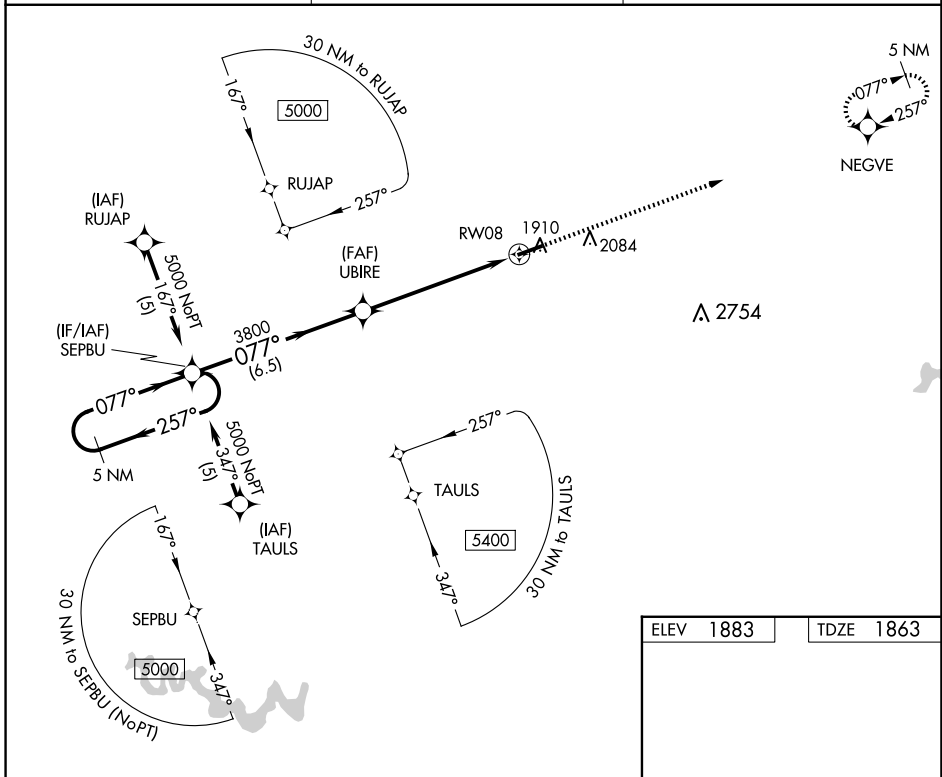
APP CRS	Rwy Idg	<b>5001</b>
<b>077°</b>	TDZE	<b>1863</b>
	Apt Elev	<b>1883</b>

# RNAV (GPS) RWY 8

SOUTHERN WEST VIRGINIA RGNL (E,B,D)

RNP APCH - GPS.		MISSED APPROACH: Climb to 5000 direct NEGVE and hold.
⚠ Obtain local altimeter setting on CTAF; when not received, use Beckley altimeter setting; increase all MDAs 140 feet and visibility LNAV Cat C/D and Circling Cat A/B ¼ SM and Circling Cat C ½ SM.		

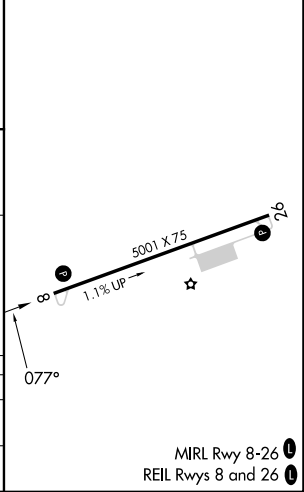
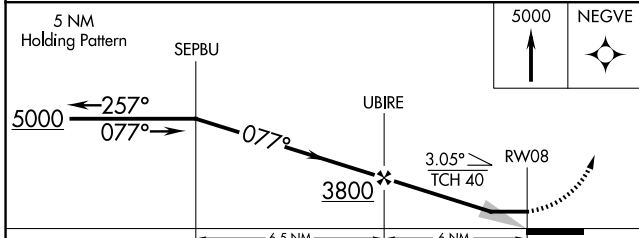
I16 AWOS-3 <b>120.625</b>	INDIANAPOLIS CENTER <b>126.575 257.85</b>	UNICOM <b>122.8 (CTAF) 0</b>
------------------------------	--	---------------------------------



NE-4, 16 APR 2026 to 14 MAY 2026

NE-4, 16 APR 2026 to 14 MAY 2026

ELEV 1883	TDZE 1863
-----------	-----------



CATEGORY	A	B	C	D
LNAV MDA	2580-1 717 (700-1)	2580-1¼ 717 (700-1¼)	2580-2	717 (700-2)
CIRCLING	2680-1	797 (800-1)	2760-2½ 877 (900-2½)	2900-3 1017 (1100-3)

MIRL Rwy 8-26  
REIL Rwy 8 and 26