

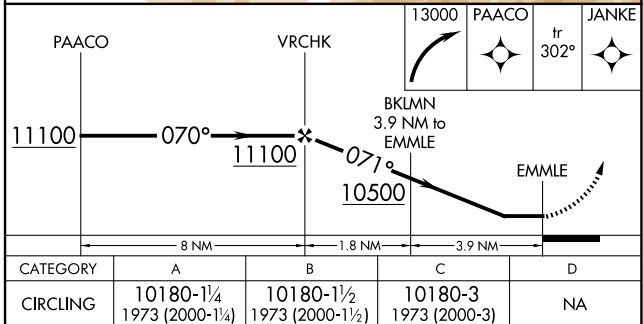
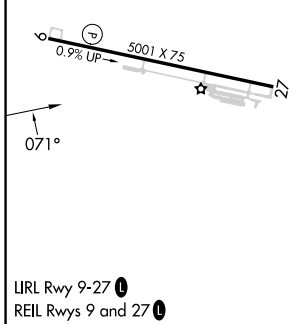
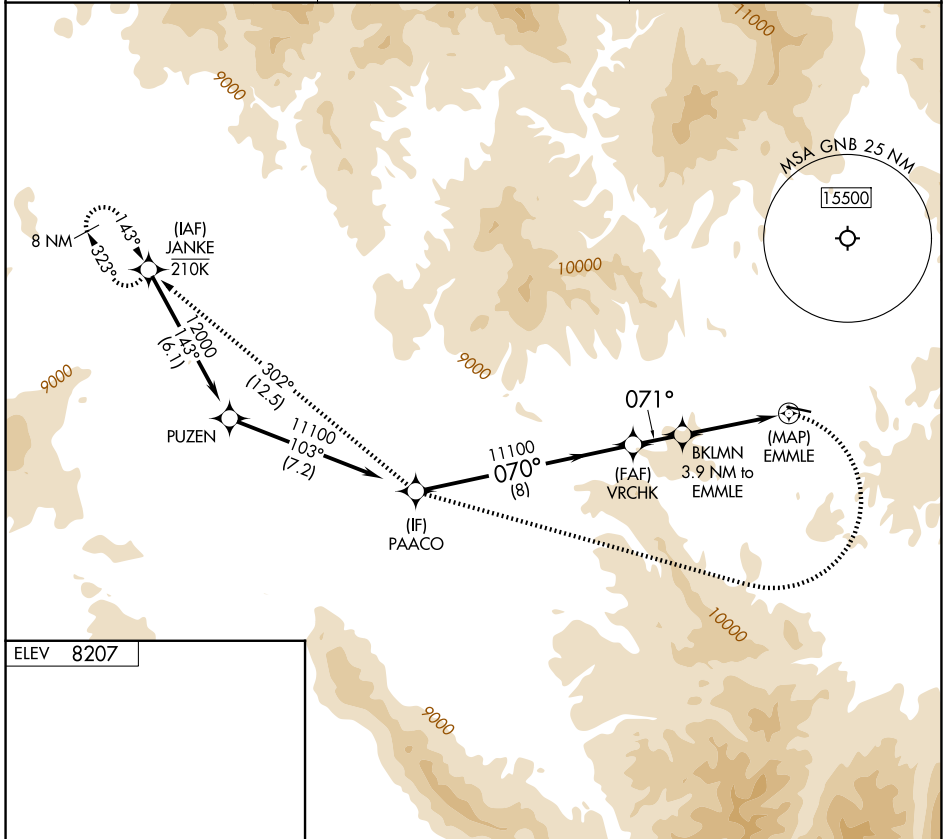
APP CRS <b>071°</b>	Rwy Ldg TDZE Apt Elev	<b>N/A</b> <b>N/A</b> <b>8207</b>
------------------------	-----------------------------	---

# RNAV (GPS)-C

GRANBY-GRAND COUNTY (GNB)

RNP APCH - GPS.	MISSED APPROACH: (Do not exceed 165K until PAACO) Immediate climbing right turn to 13000 direct PAACO and on track 302° to JANKE and hold.
Procedure NA at night. Rwy 27 helicopter visibility reduction below 1 SM NA. -24°C	

AWOS-3PT <b>119.925</b>	DENVER CENTER <b>128.65 282.2</b>	UNICOM <b>123.0</b> (CTAF) <b>0</b>
----------------------------	--------------------------------------	--



SW-1, 16 APR 2026 to 14 MAY 2026

SW-1, 16 APR 2026 to 14 MAY 2026